



University
Centre
Somerset

PROSPECTUS 2021 - 22

HEALTH, SOCIAL STUDIES,
SPORT AND PUBLIC SERVICES



somerset.ac.uk



BRIDGWATER
& TAUNTON
COLLEGE

THE HEALTH SECTOR

IS THE LARGEST EMPLOYER IN THE UK.

(CareerPilot – Health & Social Care and Sport & Leisure Key Facts)

THERE IS A WORLD-WIDE DEMAND FOR PEOPLE WITH PROFESSIONAL QUALIFICATIONS IN HEALTH AND SOCIAL CARE – SO YOU COULD TRAVEL AND WORK IN OTHER COUNTRIES AFTER TRAINING IN THE SOUTH WEST.

(CareerPilot – Health & Social Care and Sport & Leisure Key Facts)

FORECASTS SUGGEST THERE WILL BE **SUBSTANTIAL GROWTH** IN HEALTH AND FITNESS, SPORT AND RECREATION AND OUTDOOR ACTIVITIES IN THE SOUTH WEST. COACHES, TEACHERS AND INSTRUCTORS MAKE UP ALMOST TWO IN FIVE OF THE PAID WORKFORCE.

(CareerPilot – Health & Social Care and Sport & Leisure Key Facts)

THE AVERAGE UK SALARY FOR A

£29,588 **SPORTS COACH**

(CareerPilot – Health & Social Care and Sport & Leisure Key Facts)



CONTENTS

- 4 Facilities
- 6 Access to HE
- 8 Higher & Degree Level Apprenticeships
- 10 Early Childhood Studies BA (Hons)
- 12 Early Childhood Studies Foundation Degree
- 14 Early Childhood Studies BA (Hons) Top-up
- 16 Early Years Advanced Practitioner Level 4 (NCFE CACHE)
- 18 Advanced Practitioner in Schools and Colleges Level 4 Certificate
- 20 Leadership for Children & Young People's Workforce Early Years Management Level 5
- 22 Leadership & Management for Residential Childcare Level 5
- 24 Health & Social Care BA (Hons)
- 26 Health & Social Care Foundation Degree
- 28 Health & Social Care BA (Hons) Top-up
- 30 Adult Care Level 4 Diploma
- 32 Leadership & Management for Adult Care Level 5 Diploma
- 34 Assistant Practitioner (Health) Level 5 Diploma
- 36 Primary Care and Health Management Level 5 Certificate/Diploma
- 38 Sports Science with Sports Coaching Education Foundation Degree
- 42 Applied Sports Science and Coaching BSc (Hons) Top-up
- 46 Public Services and Criminology Foundation Degree
- 49 Where to find us
- 51 University Centre Somerset course list



Facilities

The Health & Social Care and Early Childhood Studies courses are designed to enable progression to a range of related fields, including nursing, midwifery, social work, mental health, elderly care, early years provision and more.

Our Sport and Public Services programmes have long-standing relationships with elite clubs and organisations to ensure our students get real-world experience during their study.

Health and Social Care Centre

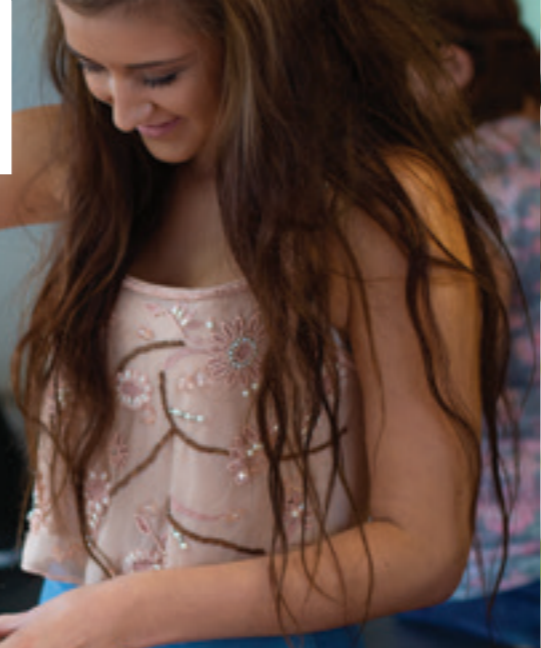
With a suite of well-equipped labs and modern classrooms utilising the very latest teaching and learning technology, our Health and Social Care Centre is a hub of activity. Students acquire theoretical knowledge and practical skills by working under the supervision

of our expert staff, and seek to embed their learning through professional placements in a variety of relevant workplace settings.

Sports facilities

Across our campuses we have a range of facilities including a floodlit 3G FIFA approved artificial pitch, five football pitches, a rugby pitch, sports halls, gyms, sports rehabilitation rooms and a studio cycling facility. We also host a stunning 9-hole golf course in the beautiful Cannington countryside and an Outdoor Activity Centre.

In addition, sports students learn in a dedicated sports science lab containing a range of physiology and biomechanics equipment, and have use of sports halls and outdoor spaces for coaching.



Access to HE

An Access to Higher Education Diploma is designed to provide a route for learners aged 19 or over who possess few or no formal qualifications to progress to university-level study. It can lead to a wide range of career and Higher Education opportunities here at University Centre Somerset or at another university of your choice.

We offer four different routes, each with particular progression opportunities linked to them.

Courses include:

- Health & Social Care
- Nursing & Midwifery
- Science
- Social Science.

In addition, Access to HE students may study core subjects to support their learning. These include:

- Study Skills
- Information Technology
- English
- Maths
- Tutorial.

If you complete an Access to HE course and then go on and complete a degree or other recognised higher education course, you won't have to repay the remaining loan for the Access to HE course.

Teaching & Assessment

The majority of modules are taught via lectures; other teaching methods include seminars, tutorials, workshops and guided learning/ independent activities. There is one exam and you will also produce a portfolio of work over the year, from which you will accumulate credits towards the Diploma.

Where does it lead?

Successful completion of this course will provide you with a qualification that will allow you to apply to study a university-level course. In recent years, students have gone on to study a wide range of subjects including Biomedical Science, Medicine, and Nursing degrees at UWE Bristol; Nursing, Midwifery, and Occupation Therapy degrees at the University of Plymouth; Occupational Therapy at Liverpool University; Marine Biology at Portsmouth University; Social Work at the University of Bath; or Health & Social Care degrees here at University Centre Somerset (Taunton).

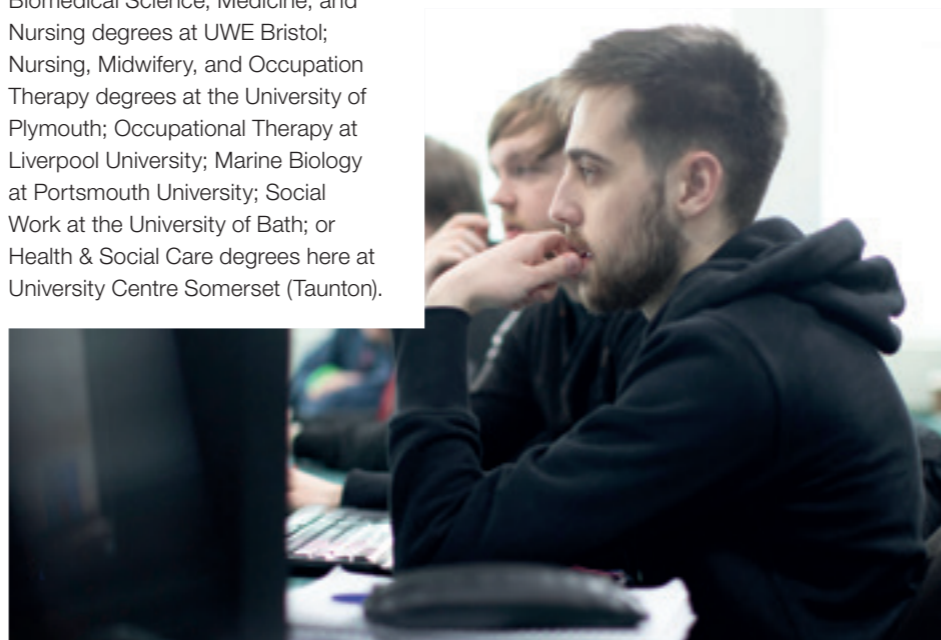


Duration: 30 weeks

Location: Taunton

Entry requirements

- Self-motivation and a willingness to learn along with sufficient time for independent study
- There are no formal qualifications required for entry but you will undergo an initial assessment to ensure you are on the right course for your skill level and you may need to have relevant work experience
- You are required to be aged 19 or over and may be eligible for a loan to cover your course fees.



Higher & Degree Level Apprenticeships

With the introduction of the Apprenticeship Levy in April 2017, employers are offering more Apprenticeships at various levels. Our expertise and partnerships with industry enables us to facilitate opportunities that address the increasing demand for higher-level skills in Somerset and beyond. Higher and degree level Apprenticeships are a popular choice and provide you the chance to gain applicable skills and knowledge about an industry. Please see our list of courses opposite, check our website or call for more information on the types of Apprenticeships we offer and our employer partners.

What is an Apprenticeship?

Apprenticeships are an effective way of studying, enabling you to gain a nationally recognised qualification whilst obtaining practical on-the-job experience. In our recent Ofsted inspection our Apprenticeship provision was rated Outstanding with Ofsted inspectors

stating that “Apprentices develop an extensive range of skills and knowledge and many extend and deepen specialist skills beyond the requirements of their qualifications.”

Higher Apprenticeships refers to Apprenticeships that may include the achievement of academic/vocational qualifications at Level 4 and 5 such as HNCs, HNDs and Foundation Degrees, while degree level Apprenticeships can provide qualifications up to Level 6 or 7, such as a full BA, BSc or BEng Honours Degree, or in some cases even a Masters Degree.

Increasingly, you may hear Apprenticeships referred to as standards. These were introduced by the government as part of ongoing Apprenticeship reforms to meet the needs of employers. Standards are occupation-focused, they are not qualification-led and the content is decided by each employer, depending on their business requirements.

Why choose an Apprenticeship?

They are a great option for anyone looking for a fast track into a career. A Higher or Degree Level Apprenticeship brings together the best of higher and vocational training and enables higher education study plus invaluable on-the-job training without having to cover the cost of tuition. Fees for Apprenticeships are subsidised by employers and the government, and a salary is then paid to the individual undertaking the Apprenticeship programme – meaning that doing a Degree Apprenticeship can leave you debt-free and provide you with many years’ industry experience.

What can I study on an Apprenticeship?

Today you can study anything from human resources to mechanical engineering, health & social care to cyber security, and much more. We have more than 20 on offer and are continually updating our portfolio to support industry demand.

How long is an Apprenticeship?

A Higher or Degree Level Apprenticeship will likely last as long as 3 years, but could take as long as 5-6 years. As an apprentice, you would be employed full-time, although the combination of work and study can vary from one employer to another. Generally you’ll be required to work 30 hours per week, to leave you time to study, but that could take one of several forms - options include:

- **Day release**
Studying at UCS one day per week
- **Block learning**
Studying for 1-2 weeks at a time

Full-time education

For some employers apprentices will study full-time for the first year of their Apprenticeship, working with the employer during UCS holidays, and starting full-time employment after that first year.

What should I do next?

If you feel that an Apprenticeship may be for you, get in touch with our dedicated team who can talk through your options and what to do next. Call 01278 655111 or email apprenticehelp@btc.ac.uk.

Higher & Degree Level Apprenticeships

Our Apprenticeship offer is continually developing and changing due to business demands and changes to the Apprenticeship structure. Therefore, this list should only be considered as a guide.

HEALTH AND SOCIAL CARE

Children, Young People and Families Practitioner Level 4
Children, Young People and Families Manager Level 5
Lead Practitioner in Adult Care Level 4
Leader in Adult Care Level 5
Healthcare Assistant Practitioner Level 5
Leadership and Management for Adult Care Level 5
Leadership and Management for Residential Childcare Level 5
Adult Care Level 4
Nursing Associate Level 4

BUSINESS

Professional Accountant Level 4
Project Manager Level 4
Chartered Manager Level 6 Degree
HR Consultant/Partner Level 5
Operations/Departmental Manager Level 5

COMPUTING

Digital Technology Solutions Level 6 Degree

We also offer apprenticeships in a number of other industries:

CONSTRUCTION

ENGINEERING AND NUCLEAR

LAND-BASED

For more information, visit www.somerset.ac.uk





Early Childhood Studies

BA (Hons)

Whether experienced in the early years sector or not, if you are committed to making a difference to the lives of children, young people and families, this degree in Early Childhood Studies is the perfect foundation for your career. While studying our degree, you will develop the skills as a critically reflective practitioner and learn to be a creative and visionary leader needed for effective practice in a diverse, multidisciplinary environment.

Whether you are already working in a setting or if you have no experience with children, this course allows you to gain theoretical knowledge as well as practical skills. If you do not already have a vocationally related qualification at Level 3, In Year 2 you have the option to be assessed against the National Occupational standards and achieve either a Level 3 Diploma for the Early Years Practitioner or Level 3 Diploma in Specialist Support for Teaching and Learning in Schools.

The modules studied may include:

- The Reflective Practitioner
- The Child in Society
- Introduction to Leadership and Management
- Child Health and Wellbeing
- Dissertation: Primary Research or Secondary Research.

Teaching and Assessment

There are no exams on this programme, each module is assessed by means of assignments which



may include; reflective essays, the development of learning resources and presentations. Teaching sessions take the form of short lectures, supervised discussions, small group work and guest speakers.

Progression Opportunities

You could secure employment in family support and projects working in a range of early years settings – children’s centre worker, home/school liaison officer, early years practitioner

or a role within a primary school. The Honours Degree could also lead to management and leadership roles within early years settings, children’s centres and schools. Post-graduate qualifications such as a PGCE are also a possibility.



Entry Requirements

- Typically entrants will possess:
- A minimum of 80 UCAS points from a full Level 3 qualification
 - At least four GCSEs at grade 4 and above including English and maths, or Level 2 equivalent.

You will be required to undergo a Disclosure and Barring Service check (formerly known as CRB) prior to commencing any work placement.

| | |
|-------------------|---------------------|
| Type: | Bachelors Degree |
| UCAS Code: | 887B |
| Institution code: | B70 |
| Attendance: | Full-time |
| Location: | Taunton |
| Awarding body: | The Open University |

There may be the opportunity to study our full-time courses on a part-time basis, please contact us to discuss.





“I love the fact I am able to attend lectures and debate interesting topics.

The staff are great: they are easy to reach and offer informative teaching that is grounded in professional experience. They support us in developing our careers after our studies, which is really helpful.

I work part-time in a private nursery and have already found that my studies enhance my professional practice. I like the fact I can carry on working while gaining my qualification.”

Claire Moore, Early Childhood Studies Foundation Degree

Early Childhood Studies



Foundation Degree

Whether experienced in the early years sector or not, if you are committed to making a difference to the lives of children, young people and families, this Foundation Degree in Early Childhood Studies is the perfect underpinning for your career. Extensive research has been conducted throughout the development of this programme through the engagement of early years’ employers, head teachers, parents, children, early years and primary school practitioners and recent and past graduates.

If you do not already possess a vocationally related qualification, in Year 2 you have the option to be assessed against the National Occupational Standards, culminating in the achievement of an optional Level 3 Diploma for the Early Years Practitioner or Level 3 Diploma in Specialist Support for Teaching and Learning in Schools.

The modules studied may include:

- The Reflective Practitioner
- The Child in Society
- Language & Literacy Development
- Introduction to Leadership and Management
- Child Health and Wellbeing
- Working with Children & Families.

Teaching and Assessment

There are no exams on this programme, each module is assessed by means of assignments which may include; reflective essays, the development of learning resources and presentations. Teaching sessions take the form of short lectures, supervised discussions, small group work and guest speakers.

This course is delivered on-site each week across the academic year.

Career Progression

This Foundation Degree will open up a variety of career paths and can lead to employment in family support and projects working in a range of early years settings including children’s centre worker, home/school liaison officer, early years practitioner or a role within a primary school.

Entry Requirements

Typically entrants will possess:

- A minimum of 64 UCAS tariff points from a full Level 3 qualification in a related subject area
- At least four GCSEs including English and maths at grade 4 and above, or a recognised equivalent.

You will be required to undergo a Disclosure and Barring Service check prior to commencing any work placement.

| | |
|-------------------|---------------------|
| Type: | Foundation Degree |
| UCA Code: | 86G4 |
| Institution code: | B70 |
| Attendance: | Full-time |
| Location: | Taunton |
| Awarding body: | The Open University |

There may be the opportunity to study our full-time courses on a part-time basis, please contact us to discuss.





Early Childhood Studies



BA (Hons) Top-up

If you are committed to making a difference to the lives of children, young people and families, the Top-up Degree in Early Childhood Studies is the perfect programme to enhance your career opportunities. You will develop skills as a critically reflective practitioner and learn to be a visionary leader needed for effective practice in a diverse, multidisciplinary environment.

The modules studied may include:

- Concepts of Childhood
- Global Perspectives on Education
- The Creative Reflective Practitioner
- Contemporary Discourses in Early Years
- Dissertation.

Teaching and Assessment

There are no exams on this programme, each module is assessed by means of assignments which may include; reflective essays, the development of learning resources and presentations. Teaching sessions take the form of short lectures, supervised discussions, small group work and guest speakers.

Career Progression

You could secure employment in family support and projects working in a range of early years settings including children's centre worker, Home/School Liaison Officer, Early Years Practitioner or a role within a primary school. The Honours Degree could also lead to management and leadership roles within early years settings, children's centres and schools. Post-graduate qualifications such as a PGCE are also a possibility.



Entry Requirements

- Applicants must have a Foundation Degree, HND or equivalent Level 5 qualification in an appropriate discipline.
- At least four GCSEs including English and maths at grade 4 and above, or a recognised equivalent.

You will be required to undergo a Disclosure and Barring Service check prior to commencing any work placement.

| | |
|--------------------------|----------------------------|
| Type: | Bachelors Degree |
| UCAS Code: | X310 |
| Institution code: | B70 |
| Attendance: | Full-time |
| Location: | Taunton |
| Awarding body: | The Open University |

There may be the opportunity to study our full-time courses on a part-time basis, please contact us to discuss.





Early Years Advanced Practitioner



Level 4 (NCFE CACHE)

This course is an ideal programme if you are looking to develop leadership and specialist skills to use in your current role, or in preparation to take on a specialist role such as a Special Educational Needs Coordinator or a Physical Activity and Nutrition Coordinator.

This course has five units, providing the opportunity to build on your existing early years knowledge and understanding, and develop skills that will promote quality, encourage leadership, prepare you for management responsibilities and allow for growth in coaching and mentoring others.

The content covers the age range from 0-5 years and may include the following areas:

- Enabling children to learn
- Promoting health and wellbeing
- Special educational needs
- Working with families
- Implementing change.

Teaching and Assessment

There are no examinations on this programme. Instead we use an internal assessment approach. You will produce a work-based portfolio of evidence to reflect application of theoretical knowledge in practice with clear expectations of engagement with statutory frameworks. Attendance may not be required as the qualification can be delivered within your workplace. The awarding body recommends 7-10 hours independent study per week.

Progression Opportunities

This qualification provides progression to a Level 5 such as the Level 5 Diploma in Leadership for Health and Social Care and Children and Young People's Services.

Entry Requirements

- Aged 18+
- Employed as an early years practitioner with Level 3 Early Years qualification.

Informal interview required.

| | |
|----------------|-----------------|
| Type: | Level 4 Diploma |
| Attendance: | Part-time |
| Location: | Workplace |
| Awarding body: | NCFE CACHE |





Advanced Practitioner in Schools and Colleges



Level 4 Certificate

This is an ideal programme if you are looking to show leadership and specialist skills used in your current role, or in preparation to take on a specialist role such as a Special Educational Needs Coordinator or a Higher Level Practitioner/Teaching Assistant.

This course has five units, providing the opportunity to build on your existing knowledge and understanding, and develop skills that will promote quality, encourage leadership, prepare you for management responsibilities and allow for growth in coaching and mentoring others.

The content covers the age range from 5-19 years and may include the following areas:

- Enabling individuals to learn
- Understanding how to support children and young people to improve their mental health and well-being
- Supporting individuals with additional needs and disability in a school or college
- Working with families and other professionals in a school or college setting
- Implementing change.

Teaching and Assessment

There are no examinations on this programme. Instead we use an internal assessment approach. You will produce a work-based portfolio of evidence to reflect application of theoretical knowledge in practice with clear expectations of engagement with statutory frameworks. Attendance may not be required as the qualification can be delivered within your workplace. The awarding body recommends 7-10 hours independent study per week.

Progression Opportunities

This qualification provides progression to a Level 5 such as the Level 5 Diploma in Leadership for Health and Social Care and Children and Young People's Services.

Entry Requirements

- Aged 18+
- Employed as a teaching assistant in a school or college
- Already hold a relevant Level 3 qualification.

Informal interview required.

| | |
|----------------|---------------------|
| Type: | Level 4 Certificate |
| Attendance: | Part-time |
| Location: | Workplace |
| Awarding body: | NCFE |





Leadership for Children & Young People's Workforce Early Years Management



Level 5

This course is ideal for managers in early years settings who would like to further develop their leadership and management knowledge and skills.

This qualification has been designed to:

- **Extend and enrich learner understanding of the early years sector**
- **Develop and enhance the practical leadership and management knowledge and skills required to manage change, lead service improvement and to embed best practice models**
- **Develop higher level thinking skills, including reflection and critical analysis**
- **Encourage learners to value continued learning and remain in the learning process**
- **Cultivate in-depth knowledge of developmental and learning theory**
- **Establish good practice and knowledge in relation to needs based assessment and planning.**

You will study shared core and mandatory units to the value of 64 credits. The remaining 26 credits

will be made up from optional units which, through discussion with your assessor and employer, will best suit your work setting.

Teaching and Assessment

You will be supported throughout your course by qualified assessors. There are no examinations on this programme. The qualification will be gained through one-to-one assessment in your workplace using a range of methods including observation of normal work activities to confirm your competence. Your understanding of the underpinning knowledge could be assessed in the form of questions, professional discussions projects, reflective accounts or workbooks.

Attendance may not be required as the qualification can be delivered within your workplace.

The awarding body recommends 7-10 hours independent study per week.

Career Progression

This qualification is accepted as an entry requirement to a number of HE programmes.

Entry Requirements

- Aged 18+
- Employed as a manager, deputy manager, room supervisor or assistant manager in early years settings
- Already hold a relevant Level 3 qualification.

Informal interview required.

| | |
|-----------------------|--------------------------|
| Type: | Level 5 Diploma |
| Attendance: | Part-time |
| Location: | Workplace |
| Awarding body: | City & Guilds |





Leadership & Management for Residential Childcare



Level 5

This is an excellent way to gain a nationally recognised Level 5 qualification while working in the residential childcare sector.

This course is suitable for learners aged 19 years and over, who are leading and managing others in residential children's homes in England.

This course builds on your existing knowledge and understanding, and develops skills that will promote quality, leadership, and management responsibilities.

The content may include the following areas:

- Lead and manage a team within a residential childcare setting
- Manage risk in residential childcare
- Implement a positive relationship policy in residential childcare
- Lead practice to support the well-being and resilience of children and young people in residential childcare
- Lead networks and multi-agency work to benefit children and young people in residential childcare.

Teaching and Assessment

A variety of methods can be used for gathering evidence towards a QCF portfolio, including assignments, case studies, direct observations, professional discussions, work products and reflective accounts.

Career Progression

Learners can progress into the relevant job role of registered manager.



Entry Requirements

- The nature of this study requires at least four GCSEs including English and maths at grade 4 and above, or a recognised equivalent.
- Potential learners will be expected to attend an interview to discuss their current skills and potential module selection
- Applicants with English as their second language must have a minimum IELTS Level 6 or equivalent

| | |
|----------------|---------------------|
| Type: | Level 5 |
| Attendance: | Part-time |
| Location: | Workplace |
| Awarding body: | The Open University |





“Had UCS not been here, there’s no way I’d have been able to achieve a degree. I need to be close to home to look after family and for my job as a carer. Coming here has given me the chance to do that while progressing my career.

The teaching here is excellent and the facilities are second to none. We’re really lucky to have this resource locally. I feel my degree is pushing me in the right direction for the future.”

Lacey Garland, BA (Hons) Health & Social Care

Health & Social Care



BA (Hons)

Whether experienced in the health and social care sector or not, this popular Honours Degree will develop your skills and knowledge of social care through a blend of work-based learning and classroom teaching. This Degree provides you with a sound and critical understanding of health and social care policy, theory and practice, as well as the skills you need for effective practice in a diverse, multidisciplinary environment.

You will learn how ethical, legal, social, economic and political factors influence the provision and development of services and gain the critical and analytical skills that underpin evidence-based practice.

In Year 2, alongside your degree studies, you can be assessed against the National Occupational Standards, culminating in the achievement of a Level 3 Diploma in Health & Social Care if you don’t already hold this qualification. If you already possess a Level 3 vocationally-related qualification you may choose to undertake alternative assessed CPD units.

The modules studied may include:

- Interpersonal Skills and Communication Strategies
- Applied Human Development
- Values, Morals and Ethics
- Managing Care Settings
- Mental Health and Wellbeing
- Social Policy
- Dissertation.

Teaching and Assessment

Assessment is largely via coursework, tests of knowledge and understanding, written assignments, reflective essays, project reports and presentations. Teaching sessions take the form of lectures, supervised discussions, small group work and guest speakers. This course is delivered on-site each week across the academic year.

Career Progression

This course opens up a variety of graduate career paths in the health and social care sectors, and gives you the potential to work in a managerial or supervisory capacity. You could become a Registered Manager in a children’s or adult setting, a Family Support Worker, Residential Care Worker in children and adult services, Youth Worker, Learning Support Worker or Assistant Social Worker. Post-graduate qualifications such as a PGCE or social work are also a possibility.

Entry Requirements

- Typically entrants will possess:
- A minimum of 80 UCAS tariff points from a full Level 3 qualification
 - At least four GCSEs including English and maths at grade 4 and above, or a recognised Level 2 equivalent.

You will be required to undergo a Disclosure and Barring Service check prior to commencing any work placement.

Mature students who do not meet these formal entry requirements are welcome to apply if they can evidence their interest, relevant experience and knowledge in the field of study.

A formal interview will be required.

| | |
|--------------------------|----------------------------|
| Type: | Bachelors Degree |
| UCAS Code: | 7F34 |
| Institution code: | B70 |
| Attendance: | Full-time |
| Location: | Taunton |
| Awarding body: | The Open University |

There may be the opportunity to study our full-time courses on a part-time basis, please contact us to discuss.



Health & Social Care | BA (Hons)





Health & Social Care



Foundation Degree

Whether experienced in the health and social care sector or not, this popular two-year Foundation Degree will develop your skills and knowledge of social care through a blend of work-based learning and classroom teaching. This course provides you with a sound and critical understanding of health and social care policy, theory and practice, as well as the skills you need for effective practice in a diverse, multidisciplinary environment. You will also learn how ethical, legal, social, economic and political factors influence the provision and development of services.

In Year 2 alongside your degree studies, you can be assessed against the National Occupational Standards, culminating in the achievement of a Level 3 Diploma in Health & Social Care if you do not already hold this qualification. If you already possess a Level 3 vocationally-related qualification you may choose to undertake alternative assessed CPD units.

The modules studied may include:

- Social Policy
- Interpersonal Skills and Communication Strategies
- Applied Human Development
- Values, Morals and Ethics
- Managing Care Settings
- Mental Health and Wellbeing.

Teaching and Assessment

Assessment is largely via coursework, tests of knowledge and understanding, and written assignments such as reflective essays, project reports and presentations. Teaching sessions take the form of short lectures, supervised discussions, small group work and guest speakers. This course is delivered on-site each week across the academic year.

Career Progression

On completion of the Foundation Degree you may decide to top-up to the full BA (Hons) at University Centre Somerset. Alternatively, the qualification will open up a variety of career paths in the health and social care sectors and give you the potential to work in a managerial or supervisory capacity.

Entry Requirements

- Typically entrants will possess:
- A minimum of 64 UCAS tariff points from a full Level 3 qualification
 - At least four GCSEs at grade 4 and above including English and maths.

You will be required to undergo a Disclosure and Barring Service check prior to commencing any work placement.

Mature students who do not meet these formal entry requirements are welcome to apply if they can evidence their interest, relevant experience and knowledge in the field of study.

A formal interview will be required.

| | |
|--------------------------|----------------------------|
| Type: | Foundation Degree |
| UCAS Code: | 8C37 |
| Institution code: | B70 |
| Attendance: | Full-time |
| Location: | Taunton |
| Awarding body: | The Open University |

There may be the opportunity to study our full-time courses on a part-time basis, please contact us to discuss.





Health & Social Care



BA (Hons) Top-up

This Top-up degree is designed for those who already hold a relevant Foundation Degree in Health & Social Care or other relevant Level 5 qualification. This Honour's level top-up will help you develop a critical understanding of health and social care policy, theory and practice, as well as the skills you need for effective graduate-level practice in a diverse, multidisciplinary environment.

You will learn how ethical, legal, social, economic and political factors influence the provision and development of services and gain the critical and analytical skills that underpin evidence-based practice. In addition, you will have the opportunity to research areas of personal interest in the health and social care sector within your dissertation module.

The modules studied may include:

- Advanced Interpersonal Skills
- Critical Practice
- Evidence in Practice
- Counselling Theory
- Dissertation.

Teaching and Assessment

Assessment is largely via coursework and written assignments – reflective essays, project reports and presentations. Teaching sessions take the form of lectures, supervised discussions, group work and guest speakers.

Career Progression

This course will open up a variety of graduate career paths in the health and social care sectors, and give you the potential to work in a managerial or supervisory capacity. You could become a Registered Manager in a children's or adult setting, a Family Support Worker, Residential Care Worker in Children or Adult Services, Youth Worker, Learning Support Worker or Assistant Social Worker. Post-graduate qualifications in Social Work or Teaching (PGCE) are also a possibility.

Entry Requirements

Applicants must have a Foundation Degree, HND or equivalent Level 5 qualification in an appropriate discipline.

You will be required to undergo a Disclosure and Barring Service check prior to commencing any work placement.

| | |
|-------------------|---------------------|
| Type: | Bachelors Degree |
| UCAS Code: | J3HR |
| Institution code: | B70 |
| Attendance: | Full-time |
| Location: | Taunton |
| Awarding body: | The Open University |

There may be the opportunity to study our full-time courses on a part-time basis, please contact us to discuss.





Adult Care

Level 4 Diploma

The Level 4 Diploma in Adult Care (England) is specifically designed for learners wanting to work in Adult Social Care in England. Working towards a Lead Adult qualification will enable you to make a positive difference to someone's life when they are faced with physical, practical, social, emotional or intellectual challenges. You will be expected to exercise judgement and take appropriate action to support individuals to maintain their independence, dignity and control. By providing leadership, guidance and direction at the frontline of care delivery you will be instrumental in improving the health and wellbeing of those receiving care and support.

This qualification allows you to learn, develop and practise the skills required for employment and/or career progression in Adult Care in England. It covers a range of topics including the importance of having the right values and behaviours. To achieve the Level 4 Diploma in Adult Care (England) learners must achieve a minimum of 70 credits overall. At least 55 credits must be achieved at Level 4 or above.

The content may include the following areas:

- Working in partnership
- Personalisation in care
- Professional practice
- Professional management and leadership
- Managing quality.

Teaching and Assessment

There are no examinations on this programme; instead we use an internal assessment approach. You will produce a work-based portfolio of evidence to reflect application of theoretical knowledge in practice with clear expectations of engagement with statutory frameworks. Attendance may not be required as the qualification can be delivered within your workplace. In addition, the awarding body recommends 7-10 hours independent study per week.

Career Progression

All social care organisations need strong leaders to meet the challenges ahead amid the growing complexity of the social care sector. This qualification provides progression to a Level 5 such as the Level 5 Diploma in Leadership for Health and Social Care and Children and Young People's Services.



Entry Requirements

- Aged 18+
- Employed as a senior adult lead or deputy manager within the relevant sector.

The competency-based qualification is designed to be assessed in the workplace as you undertake your normal work role.

| | |
|----------------|-----------------|
| Type: | Level 4 Diploma |
| Attendance: | Part-time |
| Location: | Workplace |
| Awarding body: | City & Guilds |





Leadership & Management for Adult Care



Level 5 Diploma

This course is an ideal programme if you are looking to develop leadership and specialist skills for use in a current role, or in preparation to progress or take on a developmental or specialist role.

These qualifications cover a range of services relating to Leadership and Management of Adult Care services in England. Adult Care services include:

- Residential services for older people and people with disabilities
- Domiciliary care services
- Day services
- Respite services
- Community based services.

This course requires the achievement of 11 mandatory units and 7 optional units, 18 units in total. It will provide the opportunity to build on your existing knowledge and understanding, and develop skills that will promote quality, encourage leadership, prepare you for management responsibilities and allow for growth in coaching and mentoring others.

The content may include the following areas:

- Leadership and management in adult care
- Governance and regulatory processes
- Professional development, supervision and performance management
- Service improvement, entrepreneurship and innovation
- Leading and managing services for people with learning disabilities
- Mental health and wellbeing.

Teaching and Assessment

There are no examinations on this programme; instead we use an internal assessment approach. You will produce a work-based portfolio of evidence to reflect application of theoretical knowledge in practice with clear expectations of engagement with statutory frameworks.

Attendance may not be required as the qualification can be delivered within your workplace. The awarding body recommends 7-10 hours independent study per week.

Progression Opportunities

This qualification provides the skills and knowledge required for employment and/or career progression in Adult Care in England.

Entry Requirements

- Aged 19+
- Employed in the Adult Care sector in England: New or existing registered manager, or deputy manager.

A formal college interview is required.

| | |
|----------------|-----------------|
| Type: | Level 5 Diploma |
| Attendance: | Part-time |
| Location: | Workplace |
| Awarding body: | City & Guilds |





Assistant Practitioner (Health)

Level 5 Diploma

Assistant Practitioners have skills and experience in a particular area of clinical practice. Although they are not currently registered practitioners they have a higher level of skill through their experience and training and work across both the NHS and other areas of healthcare services. Assistant practitioners can become members of the Royal College of Nursing (RCN) or the professional association for their specialisms.

As an Assistant Practitioner you'll always work under the direction of a health professional, such as a Registered Nurse, Dietician or Physiotherapist. However, your level of training and experience means you can often work alone without supervision. You'll carry out agreed procedures, referring to a professional for guidance when necessary.

Description

This competency-based Diploma is designed to be assessed in your workplace as you undertake your

normal work role. The evidence must at all times reflect the policies and procedures of your workplace as informed by current legislation, the relevant codes of conduct and service standards for the sector.

The programme includes academic and work-based practice modules designed to cover a range of skills and knowledge required by support staff working in health and social care. The programme structure includes core modules as well as specialist modules. The work based modules are designed to allow you to apply your learning to your work context and your individual learning needs.

The content may include the following areas:

- Study Skills and Lifelong Learning
- Anatomy, Physiology and Psychology of Health
- The Research Process
- Developing Practice
- Health Promotion
- Management and Leadership in Health & Social Care
- Management of Long Term Conditions across the Lifespan.

Teaching and Assessment

This competency-based Diploma is designed to be assessed in your workplace as you undertake your normal work role. The evidence must at all times reflect the policies and procedures of your workplace as informed by current legislation, the relevant codes of conduct and service standards for the sector.

Progression Opportunities

Having completed the Level 5 Diploma, learners may then progress on to Undergraduate healthcare profession programmes. Progression routes include: Nursing Degree (entry point Year 2) BSc Health and Social Care Management (Level 6) or Top-up Degrees relating to Healthcare Professions (Level 6).



Entry Requirements

- Aged 18+

| | |
|----------------|-----------------------|
| Type: | Level 5 Diploma |
| Attendance: | Part-time |
| Location: | College and Workplace |
| Awarding body: | City & Guilds |





Primary Care and Health Management

Level 5 Certificate/Diploma (Subject to validation)

These qualifications allow you to learn and develop the skills required for employment and/or career progression in general practice and related organisations. With the Certificate you will gain the essential knowledge and understanding required to ensure the efficient delivery of patient and community services as well as develop key transferable skills in communication, resource and financial management. The Diploma offers candidates the opportunity to broaden their understanding of management theory and techniques, and apply these to meet the challenges of initiating and implementing change and quality improvement.

This specialist qualification contributes knowledge and understanding towards the related Level 5 in Management whilst containing additional skills and knowledge which go beyond the scope of the National Occupational Standards (NOS). They provide valuable accreditation of skills and knowledge for candidates, without requiring or proving occupational competence. They have also been mapped to the NHS Knowledge and Skills Framework.

To attain the Level 5 Certificate in Primary Care and Health Management, you need to achieve 22 credits from the mandatory units.

To attain the Level 5 Diploma in Primary Care and Health Management, you need to achieve 38 credits from both mandatory and optional credits.

Modules may include:

- **Managing medical ethics and legal requirements in a primary care and health environment**
- **Developing and leading teams to achieve organisational goals and objectives**
- **Developing critical thinking**
- **Managing information and communication in a primary care and health environment.**

Teaching and Assessment

There are no examinations on this programme. The qualification will be gained through one-to-one assessment in your workplace using a range of methods including observation of normal work activities to confirm your competence. Your understanding of the underpinning knowledge could be assessed in the form of questions, professional discussions, projects, reflective accounts or workbooks. You will be supported throughout your course by qualified assessors.

Attendance may not be required as the qualification can be delivered within your workplace. The awarding body recommends 7-10 hours of independent study per week.

Progression Opportunities

This qualification is accepted as an entry requirement to a number of HE programmes. Alternatively, students may progress into employment as a practice manager within primary care or a health related environment. They can go on to qualifications offered by the Institute of Leadership and Management (ILM).



Entry Requirements

- Aged 18+

| | |
|----------------|---------------------|
| Type: | Level 5 Certificate |
| Attendance: | Part-time |
| Location: | Workplace |
| Awarding body: | City & Guilds |





“I come from Essex and considered universities much closer to home. But the lower tuition fees at UCS drew me here, and I’m really enjoying it.

The teaching is great and the facilities are excellent. I will definitely stay on for the BSc (Hons) top-up year and then may look for a Masters degree elsewhere. I’m thoroughly enjoying my time at UCS and feel the course is preparing me well for my next steps.”

Liam Fage, Sports Science with Sports Coaching Education Foundation Degree

Sports Science with Sports Coaching Education

Foundation Degree

The course is designed to provide students with a conceptual understanding of both the Sports Science and Sports Coaching industries. Students will gain the knowledge and experiences underpinning the various disciplines of Sports Science; whilst also developing their appreciation and understanding of the complex and diverse nature of the coaching environment. This interdisciplinary approach enables students gain a breadth and depth of knowledge in both disciplines in which they can utilise to negotiate the challenges within these industries.

Throughout the course students will have the be expected to undertake various work placements providing them with the vital experience and skills required in this sector.

Teaching and Assessment

Providing students with an exceptional teaching, learning and assessment experience is at the heart of the programme and underpins all learning outcomes within our modules.

Teaching and learning may take a variety of forms including lectures, workshops, tutorials and practical environments. Lectures allow main theories to be introduced, with workshops and practical environments allowing for the contextual application of these theories. Tutorials and one-to-ones provide students with the opportunity to access regular academic/personal support from the programme leader, ensuring the health and wellbeing of all our students is facilitated throughout the duration of their programme.

Ensuring students develop the skills required within industry, assessments on the programme adopt many forms, encouraging a diverse and contemporary approach. These assessment methods include traditional essays, laboratory reports, presentations, screencasts, podcasts and practical deliveries.

Entry Requirements

- A minimum of 48 UCAS tariff points from a full Level 3 qualification in a relevant subject area
- At least four GCSEs at grade 4 and above including English and maths, or Level 2 equivalent.

Mature applicants with relevant experience who do not have the stated entry requirements are encouraged to apply.

| | |
|-------------------|---------------------------|
| Type: | Foundation Degree |
| UCAS Code: | C605 |
| Institution code: | O66 |
| Attendance: | Full-time |
| Location: | Taunton |
| Awarding body: | Oxford Brookes University |

There may be the opportunity to study our full-time courses on a part-time basis, please contact us to discuss.





Students will undertake compulsory (c) and elective (e) modules which may include:

Year 1

- Academic & Research Enhancement (c)
- Exercise Physiology & Anatomy (c)
- The Sport and Exercise Practitioner (c)
- Skill in Sport: Learning & Mechanics (c)
- Sociology of Sport (c)
- Coaching: Theory to Practice 1 (c)
- Nutrition (e)
- Measurement & Meaning (e)
- Effective Coaching Practice (e).

Year 2

- Principles of Training (c)
- Applied Sport & Exercise Physiology (c)
- Research Methods (c)
- Sports Development (c)
- Sports Psychology (c)
- Coaching: Theory to Practice 2 (c)
- Motivating Health Behaviour (e)
- Global & Cultural Studies (e)
- Sports Biomechanics (e).



Progression Opportunities

On completion of this course, you can continue to the BSc (Hons) Applied Sports Science and Coaching Top-up at University Centre Somerset. Alternatively, you can choose to continue at Oxford Brookes University or other universities.

Career Progression

Through the various experiences provided on the programme, students will not only gain industry specific skills but develop specific graduate attributes throughout their duration being academic & research literacy, critical self-awareness and personal literacy, digital and information literacy and active citizenship.

Students can progress in to a variety of careers within the sport industry including sports development or coaching, PE teaching, sports science support, leisure and recreation management or working for county sports partnerships, to name but a few.

We may also be able to offer the opportunity of a number of internships with Yeovil Town Women FC or Taunton Town FC. These will enable you to contextualize your learning, gain valuable experiences and to stand out from other graduates due to bespoke opportunities this elite environment provides.





“I love the family feel of UCS. I think I would have felt overwhelmed in a bigger university setting, but knew I could get a good degree here. So it made sense to stay on after my time at Bridgwater & Taunton College.

The teachers are really helpful and easy to get along with. With a top-up year now available at UCS, I have a clear progression route that will help build firm foundations for my career.”

Rebecca Smith, Sports Science with Sports Coaching Education Foundation Degree

Applied Sports Science and Coaching

BSc (Hons) Top-up

The BSc (Hons) Applied Sports Science and Coaching degree has been designed to supplement the knowledge and skills developed through previous studies into sport science and coaching with a wider appreciation and understanding of the role these disciplines play in the industry. Students will develop further skills relevant to the wider aspects of working as a sports scientist and/or coach.

Teaching and Assessment

Providing students with an exceptional teaching, learning and assessment experience is at the heart of the programme and underpins all learning outcomes within our modules.

Teaching and learning may take a variety of forms from lectures, lab based work, workshops, tutorials or practical environments. Lectures allow main theories to be studied, whilst workshops and practical environments allow for the contextual application of these theories. Tutorials and one-to-ones provide students with the opportunity to access regular academic/personal support from

the programme leader, ensuring the health and wellbeing of all our students is facilitated throughout the duration of their programme.

Should students require additional learning support, this can be facilitated and supported through the UCS learning support team, allowing appropriate learning strategies to be implemented and academic support arrangements to be made.

Students are expected to engage with independent learning through our Virtual Learning Environment, which provides additional support and information on their academic programme and personal development.

Ensuring students develop the skills required within industry, assessments on the programme adopt many forms, encouraging a diverse and contemporary approach.

These assessment methods include traditional essays, a dissertation, laboratory reports, presentations, screencasts, podcasts and practical deliveries.

Entry Requirements

- Applicants must have gained 240 credits from a Foundation Degree, HND or equivalent Level 5 qualification in an appropriate discipline
- GCSE mathematics, English language and science at minimum grade 4 or C. Other equivalent Level 2 qualifications may be considered

Mature applicants with relevant experience who do not have the stated entry requirements are encouraged to apply and will be considered based on experience during an interview.

| | |
|-------------------|---------------------------|
| Type: | Bachelors Degree |
| UCAS Code: | C607 |
| Institution code: | O66 |
| Attendance: | Full-time |
| Location: | Taunton |
| Awarding body: | Oxford Brookes University |

There may be the opportunity to study our full-time courses on a part-time basis, please contact us to discuss.





Students will undertake two compulsory (c) and three elective (e) modules. The modules may include:

- **Dissertation (c)**
- **Sport Coaching Pedagogy (c)**
- **Multi-disciplinary approaches in Sports Science (c)**
- **Sports & Exercise Enterprise (e)**
- **Optimising Human Performance (e)**
- **Laboratory and Field Based Testing (e)**
- **Managing Coaching Complexities (e).**

Progression Opportunities

You can apply for a post graduate degree (MSc / MA) at wide range of institutions with support given to enable you to progress to a suitable programme.



Career Progression

Through the various experiences provided on the programme, students will not only gain industry specific skills but develop specific graduate attributes throughout their duration being academic & research literacy, critical self-awareness and personal literacy, digital and information literacy and active citizenship.

Students can progress in to a variety of careers within the sport industry including sports development or coaching, PE teaching, sports science support, leisure and recreation management or working for county sports partnerships, to name but a few.

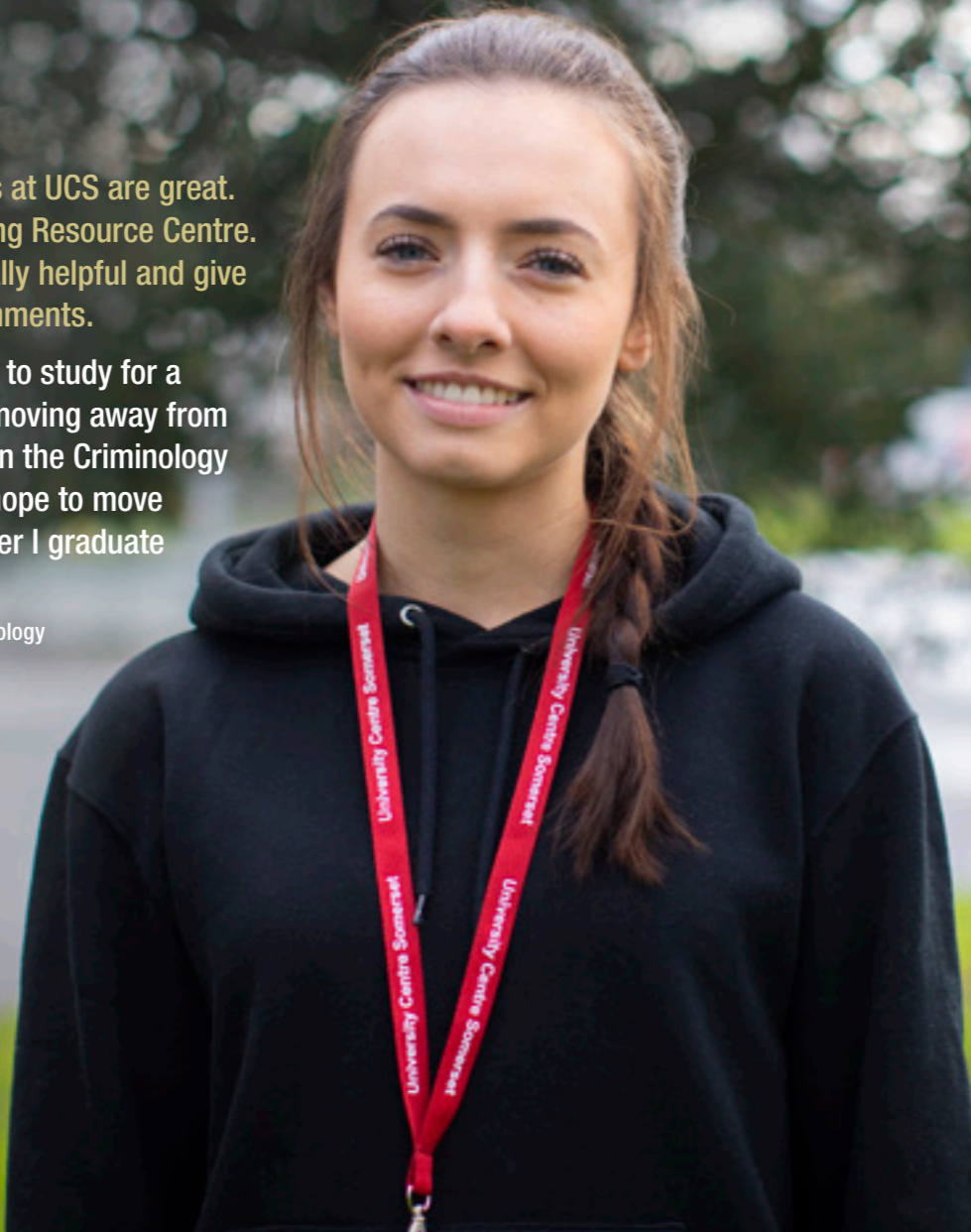
We may also be able to offer the opportunity of a number of internships with Yeovil Town Women FC or Taunton Town FC. These will enable you to contextualize your learning, gain valuable experiences and to stand out from other graduates due to bespoke opportunities this elite environment provides.



“The social and study spaces at UCS are great. I particularly like the Learning Resource Centre. Our teachers are always really helpful and give loads of support with assignments.

It’s great that I’ve been able to study for a foundation degree without moving away from home. I’m really interested in the Criminology aspects of my course, and hope to move on to a BA (Hons) top-up after I graduate from UCS.”

Tilly Darvin, Public Services and Criminology Foundation Degree



Public Services and Criminology



Foundation Degree

This course is designed for students who want to work in public services and for those who have an interest in entering the world of criminology and related public service employment.

It will allow you to understand how society functions, how criminals are conditioned to behave and the role of public services in a changing society. It will also look at how public services can use this same information to be more effective in the fight against crime. You will finish with relevant theoretical and practical knowledge that enables you to progress to a relevant final year top-up degree.

The modules studied may include:

- Introduction to the Criminal Justice
- The Mind of a Criminal
- Victims, Victimology & Restorative Justice
- Organisational Performance & Change
- Ethics in the Balance.

Teaching and Assessment

The course is delivered using various methods, including lectures, seminars, presentations and practicals. Assessment will be through assignments or essays, portfolios, practical assessments and presentations.

Progression Opportunities

Upon successful completion of this course you can top-up to a full Honours Degree by studying the BSc (Hons) Top-up Public Services at Exeter College, BSc (Hons) Community & Public Services Management (City College Plymouth), or BSc (Hons) Emergency Sector Management & Interoperability (Cornwall College). Please note that there is a deadline for progression applications and places may be subject to availability.

Alternative options are available with other universities. Many of our students have taken up employment in the public services sector including the Police, Fire and Ambulance Services, HM Forces, HM Prison Service and outdoor education and activity centres.

Entry Requirements

- You will require a minimum of 48 UCAS tariff points from a full Level 3 qualification in a relevant subject area
- At least four GCSEs at grades 4 and above, including maths and English, or Level 2 equivalent.

Mature applicants with relevant experience who do not have the stated entry requirements are encouraged to apply.

| | |
|-------------------|------------------------|
| Type: | Foundation Degree |
| UCAS Code: | L437 |
| Institution code: | O66 |
| Attendance: | Full-time |
| Location: | Taunton |
| Awarding body: | University of Plymouth |

There may be the opportunity to study our full-time courses on a part-time basis, please contact us to discuss.





Where to find us

One of the benefits of University Centre Somerset is our accessibility. So however you're travelling, you will find us easy to get to.

Rail

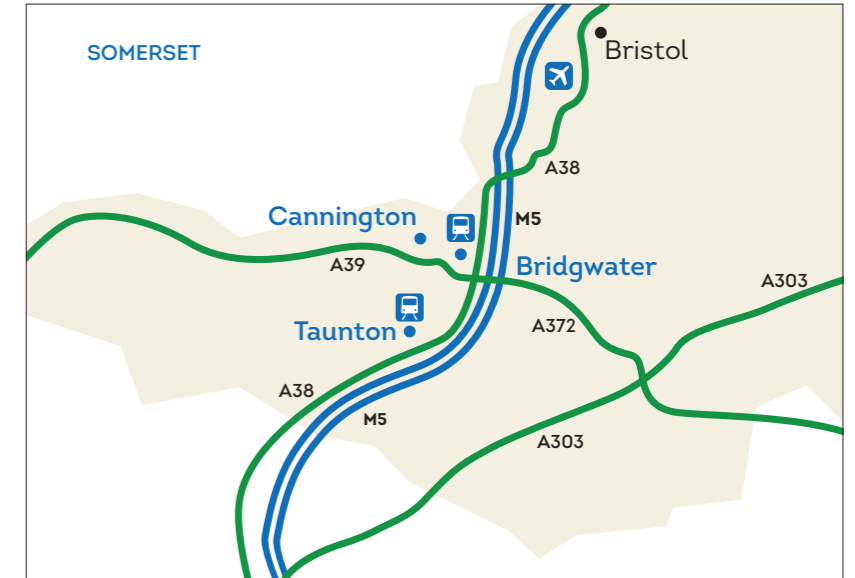
Our Taunton and Bridgwater campuses are easily accessible by train. Both towns are on the main line from Bristol to Exeter, and our campuses are within an easy walk or taxi ride of the station.

Bus

We have bus stops on each of our campuses, served by many local bus routes. A regular connection runs between the Bridgwater and Cannington campuses.

Car

All three campuses are easily accessible from the M5 motorway. Each campus offers limited parking, including designated areas for disabled parking, mopeds and bicycles. You will be charged **£1 per day to park at our Taunton campus**, while parking is free at the Bridgwater and Cannington campuses.



Taunton campus

Wellington Road
Taunton
Somerset
TA1 5AX

01278 455464
info@somerset.ac.uk



Bridgwater campus

Bath Road
Bridgwater
Somerset
TA6 4PZ

Cannington campus

Rodway
Cannington
Somerset
TA5 2LS





UCS course list

COMPUTING AND PROFESSIONAL

Computing & Digital Technologies
BSc (Hons)

Computing & Digital Technologies
Foundation Degree

Computing & Digital Technologies
BSc (Hons) Top-up

Accounting
AAT Level 4 Professional Diploma

Chartered Manager
Degree Apprenticeship Level 6

Operations/ Departmental Manager
Higher Apprenticeship Level 5

CIPD Human Resources Management
Level 5 Certificate

Education & Training
Level 4 Certificate

Education & Training
Level 5 Diploma

Certificate in Education
Level 4 Certificate

PGCE
Level 6 Diploma

Counselling Practice
Level 4 Diploma

Psychotherapeutic Counselling
Level 5 Diploma

Apprenticeships Professional Accountant
Level 4

Project Manager
Level 4

Chartered Manager
Level 6 Degree

HR Consultant/Partner
Level 5

Operations/Departmental Manager
Level 5

Digital Technology Solutions
Level 6 Degree

LAND-BASED

Agricultural Management
Foundation Degree

Agricultural Management
BSc (Hons) Top-up

Animal Management and Wildlife Conservation
BSc (Hons)

Animal Management and Wildlife Conservation
Foundation Degree

Animal Management and Wildlife Conservation
BSc (Hons) Top-up

Animal Management
Level 4 Professional Certificate

Wildlife Conservation
Level 4 Professional Certificate

Apprenticeships Agriculture
Level 4



For information about all of our courses visit www.somerset.ac.uk where you can also request prospectuses for each subject area.



CONSTRUCTION AND ENGINEERING

Construction and the Built Environment
HNC Level 4

Construction & the Built Environment (Civil Engineering)
HNC Level 4

Construction & the Built Environment (Civil Engineering)
HND Level 5

Mechanical Engineering
Foundation Degree

Mechatronics
Foundation Degree

Aeronautical Engineering
HNC Level 4

Electrical & Electronic Engineering
HNC Level 4

Manufacturing Engineering
HNC Level 4

Mechanical Engineering
HNC Level 4

Engineering
HND Level 5

General Engineering
HNC Level 4

Motorsport Engineering
Foundation Degree

Motorsport Technology
BEng (Hons) Top-up

Nuclear Engineering
Higher & Degree Level
Apprenticeships

Apprenticeships
Construction Quantity Surveying Technician
Level 4

Construction Design and Build Technician
Level 4

Construction Site Engineering Technician
Level 4

Construction Site Supervisor
Level 4

HEALTH, SOCIAL STUDIES AND SPORT

Early Childhood Studies
BA (Hons)

Early Childhood Studies
Foundation Degree

Early Childhood Studies
BA (Hons) Top-up

Early Years Advanced Practitioner
Level 4 (NCFE CACHE)

Advanced Practitioner in Schools and Colleges
Level 4 Certificate

Leadership for Children & Young People's Workforce Early Years Management
Level 5

Leadership & Management for Residential Childcare
Level 5

Health & Social Care
BA (Hons)

Health & Social Care
Foundation Degree

Health & Social Care
BA (Hons) Top-up

Adult Care
Level 4 Diploma

Leadership & Management for Adult Care
Level 5 Diploma

Assistant Practitioner (Health)
Level 5 Diploma

Primary Care and Health Management
Level 5 Certificate/Diploma

Sports Science with Sports Coaching Education
Foundation Degree

Applied Sports Science and Coaching
BSc (Hons) Top-up

Public Services and Criminology
Foundation Degree

Children, Young People and Families Practitioner
Level 4

Apprenticeships
Children, Young People and Families Manager
Level 5

Lead Practitioner in Adult Care
Level 4

Leader in Adult Care
Level 5

Healthcare Assistant Practitioner
Level 5

Leadership and Management for Adult Care
Level 5

Leadership and Management for Residential Childcare
Level 5

Adult Care
Level 4

Nursing Associate
Level 4

CREATIVE ARTS

Art & Design
Foundation Diploma

Creative Fashion and Textile Design
BA (Hons)

Creative Fashion and Textile Design
Foundation Degree

Fashion Design
BA (Hons) Top-up

Textiles & Surface Design
BA (Hons) Top-up

Fine Art
BA (Hons)

Fine Art
Foundation Degree

Fine Art
BA (Hons) Top-up

Creative Design and Communication
BA (Hons)

Creative Design and Communication
Foundation Degree

Graphic Media and Communication
BA (Hons) Top-up

Media Make-up
BA (Hons)

Media Make-up
Foundation Degree

Media Make-up
BA (Hons) Top-up

Media Production
Foundation Degree

Music Production
Foundation Degree

Performance Arts
Level 4 ATCL

Apprenticeships
Fashion & Textiles Product Technologist
Level 4

For information about all of our courses visit www.somerset.ac.uk where you can also request prospectuses for each subject area.





University
Centre
Somerset

Part of Bridgwater & Taunton College

COME AND SEE FOR YOURSELF

HE Open Events

Come and visit to see what makes
University Centre Somerset the perfect
place to start your journey.

Book your place now at
someset.ac.uk/events

Wellington Road, Taunton, Somerset TA1 5AX
01278 455464 | info@btc.ac.uk | someset.ac.uk



someset.ac.uk