



University
Centre
Somerset

PROSPECTUS 2021 - 22

COMPUTING AND PROFESSIONAL STUDIES



somerset.ac.uk



BRIDGWATER
& TAUNTON
COLLEGE



THE COUNSELLING SECTOR EMPLOYS AROUND
1.6 MILLION PEOPLE IN
(National Careers Service) THE UK

IN 2015 AROUND
PEOPLE WORKED
IN THE EDUCATION AND TRAINING SECTOR
ACROSS THE SOUTH WEST.
(National Careers Service)

ACCOUNTING TECHNICIANS CAN EARN
£30,000
AVERAGE PER YEAR
(National Careers Service)



COMPUTING

Computing and digital technologies are one of the fastest growing industries on the planet. We have a range of innovative, industry-focused degree programmes, meaning our students are well placed when it comes to their future prospects and grasping opportunities within this exciting industry.

All of the teaching team have first-hand experience of computing with a wide range of technical specialist skills. Our computing and digital technologies curriculum covers an extensive range of subjects relevant to contemporary computing, from software development to cyber security and from virtual reality to artificial intelligence.

At the Taunton campus you will have access to excellent computing and digital technologies resources and the support of our highly experienced staff. Our degree programmes offer a practical and hands-on approach to learning that is contemporary, innovative and more importantly, creates knowledgeable and employable students.

PROFESSIONAL COURSES

Enhance your career options with one of our professional courses. Spanning Accounting, Teaching, Counselling and Management.

These courses are designed to allow you to enhance your professional skills, develop and update your knowledge and meet your personal and professional potential.



CONTENTS

6	Access to HE	22	CIPD Human Resources Management Level 5 Certificate
8	Higher & Degree Level Apprenticeships	24	Education & Training Level 4 Certificate
10	Computing & Digital Technologies BSc (Hons)	26	Education & Training Level 5 Diploma
12	Computing & Digital Technologies Foundation Degree	28	Certificate in Education Level 4 Certificate
14	Computing & Digital Technologies BSc (Hons) Top-up	30	PGCE Level 6 Diploma
16	Accounting AAT Level 4 Professional Diploma	32	Counselling Practice Level 4 Diploma
18	Chartered Manager Degree Apprenticeship Level 6	34	Psychotherapeutic Counselling Level 5 Diploma
20	Operations/ Departmental Manager Higher Apprenticeship Level 5	37	Where to find us
		39	University Centre Somerset course list



Access to HE

An Access to Higher Education Diploma is designed to provide a route for learners aged 19 or over who possess few or no formal qualifications to progress to university-level study. It can lead to a wide range of career and Higher Education opportunities here at University Centre Somerset or at another university of your choice.

We offer four different routes, each with particular progression opportunities linked to them.

Courses include:

- Health & Social Care
- Nursing & Midwifery
- Science
- Social Science.

In addition, Access to HE students may study core subjects to support their learning. These include:

- Study Skills
- Information Technology
- English
- Maths
- Tutorial.

If you complete an Access to HE course and then go on and complete a degree or other recognised higher education course, you won't have to repay the remaining loan for the Access to HE course.



Teaching & Assessment

The majority of modules are taught via lectures; other teaching methods include seminars, tutorials, workshops and guided learning/ independent activities. There is one exam and you will also produce a portfolio of work over the year, from which you will accumulate credits towards the Diploma.

Where does it lead?

Successful completion of this course will provide you with a qualification that will allow you to apply to study a university-level course. In recent years, students have gone on to study a wide range of subjects including Biomedical Science, Medicine, and Nursing degrees at UWE Bristol; Nursing, Midwifery, and Occupation Therapy degrees at the University of Plymouth; Occupational Therapy at Liverpool University; Marine Biology at Portsmouth University; Social Work at the University of Bath; or Health & Social Care degrees here at University Centre Somerset (Taunton).



Duration: 30 weeks

Location: Taunton

Entry requirements:

- Self-motivation and a willingness to learn along with sufficient time for independent study
- There are no formal qualifications required for entry but you will undergo an initial assessment to ensure you are on the right course for your skill level and you may need to have relevant work experience
- You are required to be aged 19 or over and may be eligible for a loan to cover your course fees.



Higher & Degree Level Apprenticeships

With the introduction of the Apprenticeship Levy in April 2017, employers are offering more Apprenticeships at various levels. Our expertise and partnerships with industry enable us to facilitate opportunities that address the increasing demand for higher-level skills in Somerset and beyond. Higher and degree level Apprenticeships are a popular choice and provide you the chance to gain applicable skills and knowledge about an industry. Please see our list of courses opposite, check our website or call for more information on the types of Apprenticeships we offer and our employer partners.

What is an Apprenticeship?

Apprenticeships are an effective way of studying, enabling you to gain a nationally recognised qualification whilst obtaining practical on-the-job experience. In our recent Ofsted inspection our Apprenticeship provision was rated Outstanding with Ofsted inspectors

stating that “Apprentices develop an extensive range of skills and knowledge and many extend and deepen specialist skills beyond the requirements of their qualifications.”

Higher Apprenticeships refers to Apprenticeships that may include the achievement of academic/ vocational qualifications at Level 4 and 5 such as HNCs, HNDs and Foundation Degrees, while degree level Apprenticeships can provide qualifications up to Level 6 or 7, such as a full BA, BSc or BEng Honours Degree, or in some cases even a Masters Degree.

Increasingly, you may hear Apprenticeships referred to as standards. These were introduced by the government as part of ongoing Apprenticeship reforms to meet the needs of employers. Standards are occupation-focused, they are not qualification-led and the content is decided by each employer, depending on their business requirements.

Why choose an Apprenticeship?

They are a great option for anyone looking for a fast track into a career. A Higher or Degree Level Apprenticeship brings together the best of higher and vocational training and enables higher education study plus invaluable on-the-job training without having to cover the cost of tuition. Fees for Apprenticeships are subsidised by employers and the government, and a salary is then paid to the individual undertaking the Apprenticeship programme – meaning that doing a Degree Apprenticeship can leave you debt-free and provide you with many years’ industry experience.

What can I study on an Apprenticeship?

Today you can study anything from human resources to mechanical engineering, health & social care to cyber security, and much more. We have more than 20 on offer and are continually updating our portfolio to support industry demand.

How long is an Apprenticeship?

A Higher or Degree Level Apprenticeship will likely last as long as 3 years, but could take as long as 5-6 years. As an apprentice, you would be employed full-time, although the combination of work and study can vary from one employer to another. Generally you’ll be required to work 30 hours per week, to leave you time to study, but that could take one of several forms - options include:

- **Day release**
Studying at UCS one day per week
- **Block learning**
Studying for 1-2 weeks at a time

Full-time education

For some employers apprentices will study full-time for the first year of their Apprenticeship, working with the employer during UCS holidays, and starting full-time employment after that first year.

What should I do next?

If you feel that an Apprenticeship may be for you, get in touch with our dedicated team who can talk through your options and what to do next. Call 01278 655111 or email apprenticehelp@btc.ac.uk.

Higher & Degree Level Apprenticeships

Our Apprenticeship offer is continually developing and changing due to business demands and changes to the Apprenticeship structure. Therefore, this list should only be considered as a guide.

BUSINESS

Professional Accountant Level 4
Project Manager Level 4
Chartered Manager Level 6 Degree
HR Consultant/Partner Level 5
Operations/Departmental Manager Level 5

COMPUTING

Digital Technology Solutions Level 6 Degree

We also offer apprenticeships in a number of other industries:

CONSTRUCTION

ENGINEERING

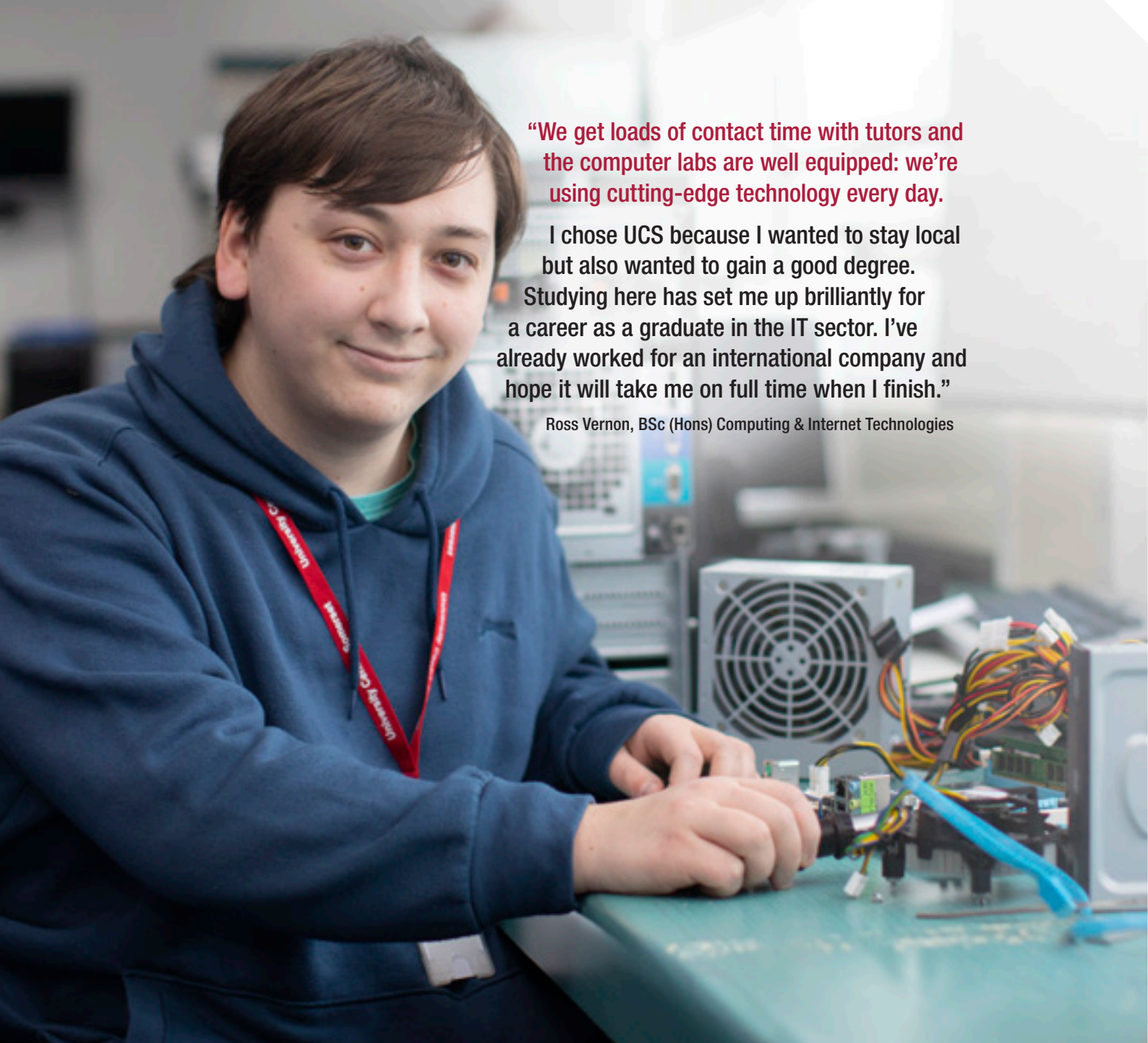
NUCLEAR

HEALTH AND SOCIAL CARE

LAND-BASED

For more information, visit www.somerset.ac.uk





“We get loads of contact time with tutors and the computer labs are well equipped: we’re using cutting-edge technology every day.

I chose UCS because I wanted to stay local but also wanted to gain a good degree. Studying here has set me up brilliantly for a career as a graduate in the IT sector. I’ve already worked for an international company and hope it will take me on full time when I finish.”

Ross Vernon, BSc (Hons) Computing & Internet Technologies



Computing & Digital Technologies

BSc (Hons)

We are living in one of the most documented, recorded, analysed and inter-connected periods in our history with many aspects of our daily lives now being assisted by increasingly complex computerised technology.

From smartphones and smart TVs to self-driving cars and big data systems, our economy places great importance on serious computing and programming skills to shape the future of society. Develop skills in computing and digital technologies and you’ll be employable the world over.

The modules studied may include:

- Advanced Programming and Software Engineering
- Web Application Development
- Virtual Reality and Immersive Technologies
- Advanced Networking and Cyber Security
- Penetration Testing and Ethical Hacking
- Artificial Intelligence and Machine Learning
- Smart Device Application Development.

Teaching and Assessment

Our specialist teaching staff have hands-on experience of working in computing, and offer expert tuition in labs and classrooms. Assessment is through a mix of assignments, practical work, reports and presentations. There are no formal examinations, only coursework. As part of the course, you will be required to undertake projects both in groups and individually.

A prominent feature of the course is the use of in-course assessment, where modules are assessed by the course teaching team as you complete them. The focus of the degree is the final year computing project, showcasing your high level computer skills in a practical project of your choice. This course is delivered on-site each week across the academic year.

Career Progression

As a computing graduate, you will be equipped with a range of computer skills that are all highly desirable to prospective employers. Moreover, you’ll have experience of working in real-world environments where adaptability and the ability to handle pressure are essential.

Entry Requirements

Typically entrants will possess:

- A minimum of 80 UCAS points from a full Level 3 qualification in a related area
- At least four GCSEs at grade 4 and above including English and maths (equivalent Level 2 in English may be considered).

Type:	Bachelors Degree
UCAS Code:	I160
Institution code:	B70
Attendance:	Full-time
Location:	Taunton
Awarding body:	The Open University

There may be the opportunity to study our full-time courses on a part-time basis, please contact us to discuss.



Computing & Digital Technologies | BSc (Hons)





Computing & Digital Technologies

Foundation Degree

This Foundation Degree will provide a rigorous study of the theory and principles underlying computing and digital technologies; developing and challenging students by establishing a high degree of expertise in the application, integration and critical evaluation of a range of computing and digital technologies, principles and practices.

The modules studied may include:

- Programming and Software Fundamentals
- Networking and Cyber Security Essentials
- 3D Visualisation and Interaction Fundamentals
- User Experience (UX) and Full Stack Development.

Teaching and Assessment

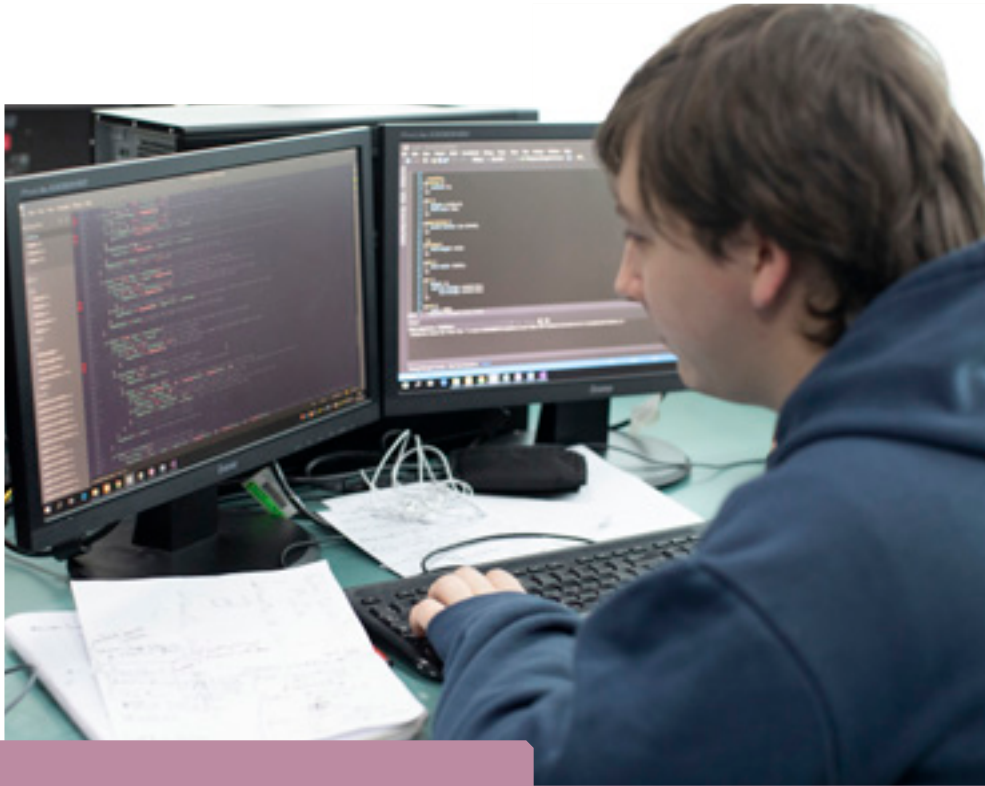
Our specialist teaching staff have hands-on experience of working in computing, and offer expert tuition in labs and classrooms. Assessment is through a mix of assignments, practical work, reports and presentations. There are no formal examinations, only coursework. As part of the course, you will be required to undertake projects both in groups and individually.

A prominent feature of the course is the use of in-course assessment, where modules are assessed by

the course teaching team as you complete them. The focus of the degree is the final year computing project, showcasing your high level computer skills in a practical project of your choice. This course is delivered on-site each week across the academic year.

Progression Opportunities

The Foundation Degree is a perfect platform for progression on to the BSc (Hons) Top-up Degree. You will be equipped with a range of computer skills that are all highly desirable to prospective employers.



Entry Requirements

Typically entrants will possess:

- A minimum of 64 UCAS points from a full Level 3 qualification in a related subject area
- At least four GCSEs at grade 4 and above including English and maths (recognised Level 2 in English may be considered).

Type:	Foundation Degree
UCAS Code:	I160
Institution code:	B70
Attendance:	Full-time
Location:	Taunton
Awarding body:	The Open University

There may be the opportunity to study our full-time courses on a part-time basis, please contact us to discuss.





“I was drawn to UCS because it offers a way of gaining a really good degree without leaving home. I considered going to other universities, but wanted to stay local.

The quality of teaching is fantastic. Our lecturers really know their stuff and give us loads of support. We have weekly one-to-one tutorials and can email them at any time. Their passion for the subject is contagious.”

James Stone, BSc (Hons) Computing & Internet Technologies Top-up

Computing & Digital Technologies

BSc (Hons) Top-up

The BSc (Hons) top-up provides students with the skills and knowledge to enter a range of computing professions, which have seen increased demand for employees at graduate level, and will equip learners with the necessary skills and academic standing to enter postgraduate study.

It also enhances employability of students by providing training with industry-standard software and access to specialised resources such as the Cyber Security and Networking Laboratory.

The modules studied may include:

- Software Development and Quality Assurance
- Smart Device Application Development
- Penetration Testing and Ethical Hacking
- Artificial Intelligence and Machine Learning
- Individual Professional Project.

Teaching and Assessment

Our specialist teaching staff have hands-on experience of working in computing, and offer expert tuition in labs and classrooms. Assessment is through a mix of assignments, practical work, reports and presentations. There are no formal examinations, only coursework. As part of the course, you will be required to undertake projects both in groups and individually.

A prominent feature of the course is the use of in-course assessment, where modules are assessed by the course teaching team as you complete them. A main focus of the programme is the professional computing project, showcasing your high level computer skills in a practical project of your choice. This course is delivered on-site each week across the academic year.

Career Progression

As a computing graduate, you will be equipped with a range of computer skills that are all highly desirable to prospective employers. Moreover, you'll have experience of working in real-world environments where adaptability and the ability to handle pressure are essential.



Entry Requirements

Typically entrants will possess:

- Foundation Degree
- or an HND
- or an equivalent Level 5 qualification in an appropriate discipline.
- At least four GCSEs at grade 4 and above including English and maths.

Type:	Bachelors Degree
UCAS code:	I161
Attendance:	Full-time
Location:	Taunton
Awarding body:	The Open University

There may be the opportunity to study our full-time courses on a part-time basis, please contact us to discuss.





Accounting

AAT Level 4

Professional Diploma

This course is recognised by the Association of Accounting Technicians (AAT), the professional body for accounting technicians, with over 100,000 members worldwide. It is the final level in the suite of AAT courses, and is valued by leading employers.

Upon completion of this level and with the required level of work experience, you can apply for Membership of the Association of Accounting Technicians, giving you the letters MAAT after your name.

Example modules include:

- Financial statements of Limited Companies
- Management Accounting Budgeting
- Management Accounting Decision and Controls
- Business Taxation
- Personal Taxation
- A synoptic assessment to test understanding and the ability to make connections between the different topics.

Teaching and Assessment

You will be required to attend one five hour session every other week, over one academic year and will be expected to spend between eight and twelve hours per week on additional work/home study. To obtain further tutorial help and study advice you will also be expected to visit the AAT website.

Progression Opportunities

The special relationships AAT holds with the main sponsoring bodies will provide you with the opportunity to progress to one of their courses and study to become a Chartered, Certified, Management or Public Finance Accountant.



Entry Requirements

You will need to hold the AAT Level 3 Diploma or an equivalent industry qualification to gain entry on to this course.

Type:	Level 4 Diploma
Attendance:	Part-time
Location:	Bridgwater
Awarding body:	AAT





Chartered Manager

Degree Apprenticeship Level 6

The Chartered Manager Degree Apprenticeship is for professional managers who take lead responsibility for people, projects, operations and/or services to deliver long term organisational success. It is applicable to professional managers from all sectors – the private, public or third sector – and all sizes of organisation.

It will typically take 4 years to complete, although the exact duration will be dependent on the previous

experience of the individual. This apprenticeship has been designed to provide access to development opportunities for as wide a range of individuals as possible.

The modules will cover the breadth and depth of the standard using suggested on-programme assessment methods that integrate the knowledge, skills and behaviour components. This ensures that the apprentice is sufficiently prepared to undertake the synoptic project, which will be assessed by University



Centre Somerset, the employer and an independent assessor. There is also the option to apply for professional recognition on achievement of the apprenticeship once the apprentice has passed their endpoint assessment.

Teaching and Assessment

Assessment will be agreed between the employer and University Centre Somerset and will be likely to include a mix of assignments, reports, practical exercises, projects, and feedback on behaviours via 360-degree feedback or equivalent mechanisms. In addition the apprentice will create a portfolio of evidence, which will demonstrate how learning has been applied, their achievements and capabilities.



Progression Opportunities

Completion of the Apprenticeship can lead to Chartered Manager status with the CMI.

For more information

Apprenticeships are termed, roll on roll off. This means there are a number of points in the year where an apprentice can start their course. Please contact the Apprenticeship team on 01278 655111 or email apprenticehelp@btc.ac.uk for more details.

Entry Requirements

Individual employers will set the selection criteria for their Apprenticeships with University Centre Somerset. Most candidates will have A Levels (or equivalent) or existing relevant Level 3 qualifications, and English, Maths and ICT at Level 2. Other relevant or prior experience may also be considered as an alternative.

Type:	Apprenticeship
Attendance:	Part-time
Location:	Taunton
Awarding body:	CMI





“This apprenticeship has taught me a new level of academic writing, which has given me confidence to write effective professional communications. My team is responsible for key organisational relationships with our partners in the Middle East; a high-pressure department and by undertaking this apprenticeship I feel better equipped for the challenges the role brings.”

Samuel Winchester, Operations/
Departmental Manager
Apprenticeship
Level 5

Operations/ Departmental Manager

Higher Apprenticeship Level 5

As an operations/departmental manager you will be someone who manages teams and/or projects, and achieves operational or departmental goals and objectives, as part of the delivery of your organisation’s strategy. You are accountable to a more senior manager or business owner.

Your specific responsibilities and job title may vary, but the knowledge, skills and behaviours needed will be the same. Your key responsibilities may include creating and delivering operational plans, managing projects, leading and managing teams, managing change, financial and resource management, talent management, coaching and mentoring.



As part of this apprenticeship standard you will study a CMI Level 5 Diploma in Management & Leadership which will cover the majority of the knowledge and skills elements required. This may include the following units:

- Using reflective practice to inform personal and professional development
- Principles of management and leadership in an organisational context
- Developing, managing and leading individuals and teams to success
- Creating and delivering operation plans.

Teaching and Assessment

On-programme assessment will include regular assessment (involving your employer and University Centre Somerset), development of a portfolio demonstrating learning and development activities within the workplace and evidence of 360-degree feedback within the ongoing development portfolio.

At the point of ‘gateway readiness’ you will be prepared for End Point Assessment which will include a test of knowledge using scenarios, competency-based interview, assessment of portfolio evidence, a presentation of work-based project approach and findings with Q&A.

Progression Opportunities

On completion, apprentices can register as full members with the Chartered Management Institute and/or the Institute of Leadership & Management, and those with three years’ management experience can apply for Chartered Manager status through the CMI.

Who to contact with your questions

Whether you are a business owner/ senior manager considering how CMI Apprenticeships could benefit your organisation, or an individual seeking to gain a recognised management qualification whilst earning a salary, please contact the Apprenticeship team on 01278 655111 or email apprenticehelp@btc.ac.uk for more information.

Entry Requirements

- Typically entrants will be:
- Employed in a junior/middle management position (one year minimum)
 - Have a CMI Certificate in First Line Management or an NVQ Level 4 in Management

Mature students without the stated entry requirements but with appropriate experience, are encouraged to apply.

Type:	Apprenticeship
Attendance:	Part-time
Location:	Taunton
Awarding body:	CMI





“Completing my qualification has given me an opportunity to further develop my written skills, as well as increasing my confidence in my abilities, in order to advance my career in HR.”

Victoria Pledger, Human Resources Management Level 5

CIPD Human Resources Management



Level 5 Certificate

This qualification will help you develop your ability to evaluate the effectiveness of different HR models and practices, while increasing your understanding of the external factors that impact upon HR activities and organisations.

You will build on your expertise and develop your planning, analytical and problem-solving skills.

Teaching and Assessment

The Intermediate Certificate is assessed through a combination of practical and written assignments. The majority of modules are taught via lectures; other teaching methods include seminars, tutorials, workshops and guided learning/independent activities.

Progression Opportunities

This qualification gives you a professionally recognised Human Resources qualification and the knowledge element required towards CIPD Associate membership. It also serves as an entry qualification for the

CIPD Level 7 Advanced Diploma in Human Resource Management at an institution of your choice, subject to meeting the institution's entry criteria.

Career Progression

On completion of this course we have found a high proportion of our students secure employment in the industry or progress within their current career.

At the time of printing, the CIPD are updating their qualification portfolio, so please visit the UCS website for the latest information, including indicative modules.



Entry Requirements

- Typically entrants will possess:
- Degree level qualification
 - or the Level 3 Certificate in Human Resource Practice (or CPP)

Mature students without the stated entry requirements but with relevant experience are encouraged to apply.

Type:	Level 5 Certificate
Attendance:	Part-time
Location:	Taunton
Awarding body:	CIPD





Education & Training

Level 4 Certificate

During this one year, part-time course you will study a number of units that underpin your role and responsibilities in becoming an outstanding practitioner of education and training. We will help you recognise the key challenges of the sector, lead the planning of your own improvement as a reflective practitioner, and develop a professional approach to your role in ways that will engage and inspire your learners or trainees.

As part of the entry requirements, you will need to provide evidence of appropriate professional practice in the education or training sector for a minimum of 30 hours over the academic year (e.g. 1 hour a week of teaching or training for 30 weeks). This should be in a leading role that carries the full range of teaching, learning and assessment responsibilities.

PEARSON

The modules studied may include:

- **Understanding Roles, Responsibilities and Relationships in Education and Training**
- **Planning to meet the needs of learners in Education and Training**
- **Teaching in a Specialist Area**
- **Delivering Education and Training**
- **Assessing Learners in Education and Training**
- **Using Resources for Education and Training.**

Teaching and Assessment

A variety of interactive teaching and learning methods are used to engage all learners and provide a stimulating HE learning environment. For example – small and large group discussions, student-led seminars, peer-assessed micro-teaching, research tasks and 1:1 tutorials. Learning technologies are also used to offer innovation and creativity.

Modules will be assessed via teaching and learning observations, written reports, reflective journal entries, peer-assessed seminars and presentations, development of specialist subject resources and a professional teaching portfolio.

Career Progression

Students who complete the Level 4 Certificate may be eligible to progress on to the Level 5 Diploma in Education and Training (DET). It could also lead to career progression in a teaching or training role within your current organisation, or teaching, lecturing or training positions in the Further Education and Skills sector.



Entry Requirements

- Access to a minimum of 30 hours professional practice in the education or training sector
- Access to regular mentor support in your specialist area is desirable
- English and Maths qualifications at Level 2 are desirable, or a willingness to achieve these whilst on programme
- A minimum of a Level 3 qualification in your specialist area – relevant professional, industrial or commercial experience will be considered if formal qualifications are not available or relevant.

Type:	Level 4 Certificate
Attendance:	Part-time
Location:	Bridgwater & Cannington
Awarding body:	Pearson





“I have enjoyed the course very much and feel that I have benefited immensely from the knowledge gained. It has equipped me with the tools needed to become a more rounded teacher/facilitator to the young learners under my care at this influential time in their lives.

Throughout the course I have received excellent support and guidance from my tutor which undoubtedly led to my successful completion of the Level 5 qualification.”

Geoff Perry, Education & Training Level 5 Diploma

Education & Training

PEARSON

Level 5 Diploma

During this course, you will study a number of units that underpin your role and responsibilities in becoming an outstanding practitioner of education and training. We will help you recognise the key challenges of the sector, lead the planning of your own improvement as a reflective practitioner, and develop a professional approach to your role in ways that will engage and inspire your learners or trainees.

The modules studied may include:

- Developing Teaching, Learning and Assessment in Education and Training
- Theories, Principles and Models in Education and Training
- Developing, Using and Organising Resources in a Specialist Area
- Teaching, Learning and Assessment in Education and Training
- Wider Professional Practice and Development in Education and Training
- Action Research.

Teaching and Assessment

A variety of interactive teaching and learning methods are used to engage all learners and provide a stimulating HE learning environment. For example – small and large group discussions, student-led seminars, peer-assessed micro-teaches, research tasks and 1:1 tutorials. Learning technologies are also used to offer innovation and creativity.

Modules will be assessed via teaching and learning observations; written reports; reflective journal entries; peer-assessed seminars and presentations; development of specialist subject resources and a professional teaching portfolio.

Career Progression

On completion, this qualification provides the opportunity to achieve QTLS in the FE & skills sector, career progression in a teaching or training role within your current organisation or teaching, lecturing or training positions in the Further Education and Skills sector.

Entry Requirements

Typically entrants will have:

- Access to a minimum of 100 hours of professional practice in the education or teaching sector. This should be in a role that carries the full range of teaching, learning and assessment responsibilities
- English and Maths qualifications at Level 2 (e.g. GCSE grade 4 or grade C or equivalent)
- Access to regular mentor support in your specialist area is desirable
- A minimum of a Level 3 qualification in your specialist area

The relevant professional, industrial or commercial experience will be considered if formal qualifications are not available or relevant.

Type:	Level 5 Diploma
Attendance:	Part-time
Location:	Bridgwater
Awarding body:	Pearson



Certificate in Education

Level 4 Certificate

This nationally-recognised course dramatically enhances your employability as a teacher. It leads to the award of Certificate in Education at NQF Level 5 by University of Plymouth. This course also has the Level 5 Diploma in Education and Training (DET) embedded into its structure.

On successful completion, it provides the opportunity to achieve QTLS (Qualified Teacher Learning and Skills) status in the Further Education and Skills Sector.

As part of the entry requirements, you will need to provide evidence of appropriate professional practice - a minimum of 100 hours of direct teaching practice, plus 30 hours additional professional practice over the duration of the course. This should be in a leading role that carries the full range of teaching, learning and assessment responsibilities.

The modules studied may include:

- Learning, Teaching & Assessment
- Theories of Learning & Managing Behaviour
- Curriculum & Society
- Wider Practice & Professional Development.

Teaching and Assessment

A variety of interactive teaching and learning methods are used to engage all learners and provide a stimulating HE learning environment. For example – classroom-based sessions, small and large group work, class discussions, seminars and individual

tutorials. Learning technologies are also used where appropriate to offer innovation and creativity. Each module is assessed by a written assignment, professional portfolio and two observations of teaching practice.

Career Progression

Completion of the course could lead to full-time or part-time employment in the Further Education and skills sector. Recent graduates have gone on to work in a variety of Further and Higher Education institutions regionally and nationally, for example Bridgwater & Taunton College and other training roles within the National Health Service (Musgrove Park).



Entry Requirements

Typically entrants will have:

- Access to a minimum of 130 hours of professional practice in education or training (minimum of 25 hours teaching practice per module)
- English and Maths qualifications at Level 2 (e.g. GCSE grade 4; grade C or equivalent)
- Access to regular mentor support in your specialist area is desirable
- A minimum of a Level 3 qualification in your specialist area

Relevant professional, industrial or commercial experience will be considered if formal qualifications are not available or relevant.

Type:	Level 4 Certificate
Attendance:	Part-time
Location:	Taunton
Awarding body:	University of Plymouth





PGCE

Level 6 Diploma

This nationally-recognised course dramatically enhances your employability as a teacher. It leads to the award of a Postgraduate Certificate in Education, at NQF Level 7 or Professional Graduate Certificate in Education at NQF Level 6 by University of Plymouth. This course also has the Level 5 Diploma in Education and Training (DET) embedded into its structure.

On successful completion, it provides the opportunity to achieve QTLS (Qualified Teacher Learning and Skills) status in the Further Education and Skills Sector.

- The modules studied may include:
- Learning, Teaching & Assessment
 - Theories of Learning & Managing Behaviour
 - Curriculum & Society
 - Wider Practice & Professional Development.

Teaching and Assessment
A variety of interactive teaching and learning methods are used to engage all learners and provide a stimulating HE learning environment. For example – classroom-based sessions, small and large group work, class discussions, seminars and individual tutorials. Learning technologies are also used where appropriate to offer innovation and creativity.

Each module is assessed by a written assignment, professional portfolio and two observations of teaching practice.

Progression Opportunities
Completion of the course could lead to full-time or part-time employment in the Further Education and skills sector. Recent graduates have gone on to work in a variety of Further and Higher Education institutions regionally and nationally, and staff training roles within the National Health Service (Musgrove Park).



- Entry Requirements**
Typically entrants will have:
- Access to a minimum of 130 hours of professional practice in education or training (minimum of 25 hours teaching practice per module)
 - Evidence of appropriate professional practice (minimum of 100 hours direct teaching practice, plus 30 hours additional professional practice over the duration of the course)
 - This should be in a leading role that carries the full range of teaching, learning and assessment responsibilities, whether on a full-time, part-time, fractional, fixed-term, temporary or voluntary basis in the Further Education and Skills sector.
 - English and Maths qualifications at Level 2 (e.g. GCSE grade 4; grade C or equivalent)
 - A subject-specific ordinary honours degree

Type:	Level 6 Diploma
Attendance:	Part-time
Location:	Taunton
Awarding body:	University of Plymouth





Counselling Practice

Level 4 Diploma

The Level 4 AIM award Diploma in Counselling Practice is for those wishing to achieve professional status in counselling. This qualification enables learners to embark on counselling practice working within an ethical framework such as BACP or NCS. The placement requirement in this qualification is essential to the personal and professional development of the practitioner.

This qualification comprises three mandatory units (Counselling Theory, Counselling Theory: a chosen approach and Study of Supervised Practice) and four optional units that provide an opportunity to deepen an understanding of theoretical perspectives within an integrative framework. These units will be delivered as lectures, tutorials and experiential activities. You will also participate in personal development groups within the course programme.

- You will learn about:
- Professional ethics and boundaries
 - The complexities of the therapeutic relationship
 - Self-critical and self-evaluative skills

- Developing supervision skills
- Understanding the effectiveness of supervision
- Developing an understanding of different theoretical approaches.

Placement requirements:

- Students will be in placement with an agency where they will have to complete a minimum of 100 hours of supervised counselling practice
- Students will need to achieve a competency to practice assignment before they can start their placement
- Students will have to join the British Association for Counselling and Psychotherapy as student members and will be required to adhere to the BACP Ethical Framework for the Counselling Professions. See the BACP website for current student membership fees.



Entry Requirements

- You will need to have completed at least a Level 3 programme in Counselling Skills and theory
- You will be invited to participate in an individual interview with the course tutors
- You will need to demonstrate experience of using your counselling skills with people in a one-to-one capacity
- You will need to demonstrate an ability to reflect on personal development as well as acknowledge areas for development.

Personal therapy:

- Students need to take part in a minimum of 25 hours personal therapy over the duration of the course. This needs to be with an experienced practitioner.

Teaching and Assessment

This qualification is assessed through the following methods:

- Externally assessed exam
- Externally assessed study of supervised practice
- Internally assessed essay
- Internally assessed case studies
- Your participation in personal and professional development.

Progression Opportunities

On successful completion of the Level 4 Diploma you will be eligible to apply for the Level 5 Diploma in Psychotherapeutic Counselling.

Type:	Level 4 Diploma
Attendance:	Part-time
Location:	Taunton
Awarding body:	AIM Award





“I have been working in a rehabilitation centre for drug and alcohol problems since 2010. In 2012 I began a teaching role at the College, as part of the Counselling programme and also teach mental health awareness. In 2013 I started my own private counselling practice.

I feel really privileged to have the opportunity to support people at a pivotal time in their lives and it fills me with a great sense of pride to know that I have helped people to turn their lives around.”

Max Dalda Muller, Course Leader, Psychotherapeutic Counselling Level 5 Diploma

Psychotherapeutic Counselling

Level 5 Diploma

The AIM Qualifications Level 5 Diploma in Psychotherapeutic Counselling provides a step onwards from our Level 4 and supports you to achieve a professional status in counselling. It may also be appropriate for those working in roles where counselling skills are needed such as social work or the voluntary sector.

This course covers five mandatory units that will support you to critically evaluate your practice, develop your research skills and evaluate the practice of counselling. The development of a business plan as part of the mandatory unit will also support you to become an independent self-employed practitioner if you did not choose to work within an organisation.

The five mandatory units are:

- Supervised Practice in Counselling
- Counselling Supervision
- Professional Standards in Counselling
- Setting up Practice
- Research in Counselling.

You will continue to work within an ethical framework such as BACP or NCS. You will be required to have completed 100 hours of supervised practice in an approved placement or professional setting. The placement requirement in this qualification is essential to the personal and professional development of the practitioner and although we can support you with looking for a placement, you will be selected on your own merits by the provider.

Placement requirements:

- You will need to be or have recently been in placement with an agency where you have to complete a minimum of 100 hours of supervised counselling practice
- If you have completed the AIM Qualifications Level 4 within the last three years, you can use these hours and the written assignment as recognition of prior learning
- If you have worked as a qualified counsellor, you can count 100 accrued practice hours but you will need to complete the study of supervised practice assignment
- You will need to achieve a competency to practice assignment before you can start your placement

- You will have to be or become a member of the British Association for Counselling and Psychotherapy and will be required to adhere to the BACP Ethical Framework for the Counselling Professions. See the BACP website for current student membership fees
- You will need to be selected by the placement and adhere to their organisational policies and procedures, if required.

Teaching and Assessment

This qualification is assessed through a combination of externally assessed assignments throughout the year including a study of supervised practice, two essays, an action plan, a research proposal and a business plan. Most units have a single assessment to be completed and there are no external exams.

Progression Opportunities

On successful completion of the Level 5 Diploma you will be able to access suitable Level 6 top-up degree programmes or develop your professionalism further in your current practice.



Entry Requirements

- You will need to have completed a Level 4 Diploma in Counselling Practice or equivalent
- You will be invited to participate in an individual interview with the course tutors that will determine your suitability for the course
- You will need to demonstrate experience of using your counselling skills with people in a one-to-one capacity
- You will need to demonstrate an ability to reflect on personal development as well as acknowledge areas for development
- You will need to commit to 25 hours of personal therapy as part of the course.

Type:	Level 5 Diploma
Attendance:	Part-time
Duration:	1 year
Location:	Taunton
Awarding body:	AIM Qualifications





Where to find us

One of the benefits of University Centre Somerset is our accessibility. So however you're travelling, you will find us easy to get to.

Rail

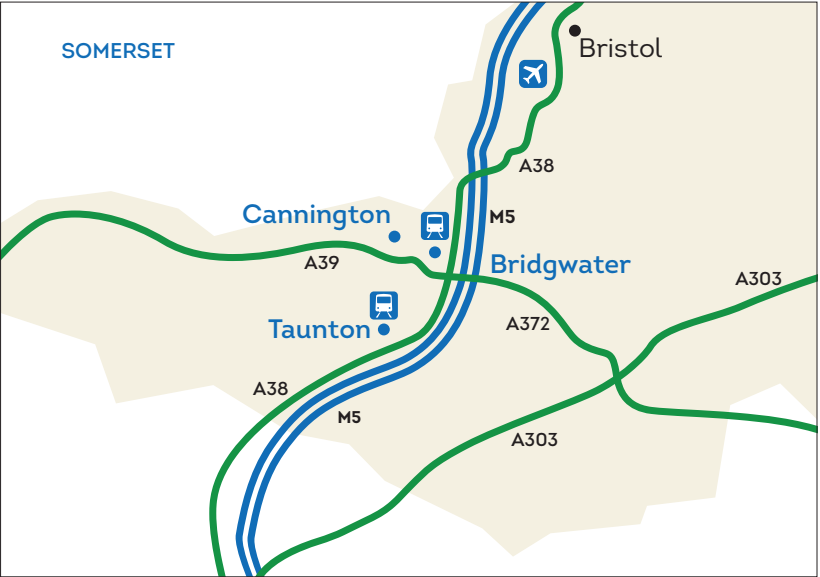
Our Taunton and Bridgwater campuses are easily accessible by train. Both towns are on the main line from Bristol to Exeter, and our campuses are within an easy walk or taxi ride of the station.

Bus

We have bus stops on each of our campuses, served by many local bus routes. A regular connection runs between the Bridgwater and Cannington campuses.

Car

All three campuses are easily accessible from the M5 motorway. Each campus offers limited parking, including designated areas for disabled parking, mopeds and bicycles. You will be charged **£1 per day to park at our Taunton campus**, while parking is free at the Bridgwater and Cannington campuses.



Taunton campus

Wellington Road
Taunton
Somerset
TA1 5AX

01278 455464
info@somerset.ac.uk



Bridgwater campus

Bath Road
Bridgwater
Somerset
TA6 4PZ

Cannington campus

Rodway
Cannington
Somerset
TA5 2LS





UCS course list

COMPUTING AND PROFESSIONAL

Computing & Digital Technologies
BSc (Hons)

Computing & Digital Technologies
Foundation Degree

Computing & Digital Technologies
BSc (Hons) Top-up

Accounting
AAT Level 4 Professional Diploma

Chartered Manager
Degree Apprenticeship Level 6

Operations/Departmental Manager
Higher Apprenticeship Level 5

CIPD Human Resources Management
Level 5 Certificate

Education & Training
Level 4 Certificate

Education & Training
Level 5 Diploma

Certificate in Education
Level 4 Certificate

PGCE
Level 6 Diploma

Counselling Practice
Level 4 Diploma

Psychotherapeutic Counselling
Level 5 Diploma

Apprenticeships
Professional Accountant
Level 4

Project Manager
Level 4

Chartered Manager
Level 6 Degree

HR Consultant/Partner
Level 5

Operations/Departmental Manager
Level 5

Digital Technology Solutions
Level 6 Degree

LAND-BASED

Agricultural Management
Foundation Degree

Agricultural Management
BSc (Hons) Top-up

Animal Management and Wildlife Conservation
BSc (Hons)

Animal Management and Wildlife Conservation
Foundation Degree

Animal Management and Wildlife Conservation
BSc (Hons) Top-up

Animal Management
Level 4 Professional Certificate

Wildlife Conservation
Level 4 Professional Certificate

Apprenticeships
Agriculture
Level 4



For information about all of our courses visit www.somerset.ac.uk where you can also request prospectuses for each subject area.



CONSTRUCTION AND ENGINEERING

Construction and the Built Environment
HNC Level 4

Construction & the Built Environment (Civil Engineering)
HNC Level 4

Construction & the Built Environment (Civil Engineering)
HND Level 5

Mechanical Engineering
Foundation Degree

Mechatronics
Foundation Degree

Aeronautical Engineering
HNC Level 4

Electrical & Electronic Engineering
HNC Level 4

Manufacturing Engineering
HNC Level 4

Mechanical Engineering
HNC Level 4

Engineering
HND Level 5

General Engineering
HNC Level 4

Motorsport Engineering
Foundation Degree

Motorsport Technology
BEng (Hons) Top-up

Nuclear Engineering
Higher & Degree Level
Apprenticeships

Apprenticeships
Construction Quantity Surveying Technician
Level 4

Construction Design and Build Technician
Level 4

Construction Site Engineering Technician
Level 4

Construction Site Supervisor
Level 4

HEALTH, SOCIAL STUDIES AND SPORT

Early Childhood Studies
BA (Hons)

Early Childhood Studies
Foundation Degree

Early Childhood Studies
BA (Hons) Top-up

Early Years Advanced Practitioner
Level 4 (NCFE CACHE)

Advanced Practitioner in Schools and Colleges
Level 4 Certificate

Leadership for Children & Young People's Workforce Early Years Management
Level 5

Leadership & Management for Residential Childcare
Level 5

Health & Social Care
BA (Hons)

Health & Social Care
Foundation Degree

Health & Social Care
BA (Hons) Top-up

Adult Care
Level 4 Diploma

Leadership & Management for Adult Care
Level 5 Diploma

Assistant Practitioner (Health)
Level 5 Diploma

Primary Care and Health Management
Level 5 Certificate/Diploma

Sports Science with Sports Coaching Education
Foundation Degree

Applied Sports Science and Coaching
BSc (Hons) Top-up

Public Services and Criminology
Foundation Degree

Children, Young People and Families Practitioner
Level 4

Apprenticeships
Children, Young People and Families Manager
Level 5

Lead Practitioner in Adult Care
Level 4

Leader in Adult Care
Level 5

Healthcare Assistant Practitioner
Level 5

Leadership and Management for Adult Care
Level 5

Leadership and Management for Residential Childcare
Level 5

Adult Care
Level 4

Nursing Associate
Level 4

CREATIVE ARTS

Art & Design
Foundation Diploma

Creative Fashion and Textile Design
BA (Hons)

Creative Fashion and Textile Design
Foundation Degree

Fashion Design
BA (Hons) Top-up

Textiles & Surface Design
BA (Hons) Top-up

Fine Art
BA (Hons)

Fine Art
Foundation Degree

Fine Art
BA (Hons) Top-up

Creative Design and Communication
BA (Hons)

Creative Design and Communication
Foundation Degree

Graphic Media and Communication
BA (Hons) Top-up

Media Make-up
BA (Hons)

Media Make-up
Foundation Degree

Media Make-up
BA (Hons) Top-up

Media Production
Foundation Degree

Music Production
Foundation Degree

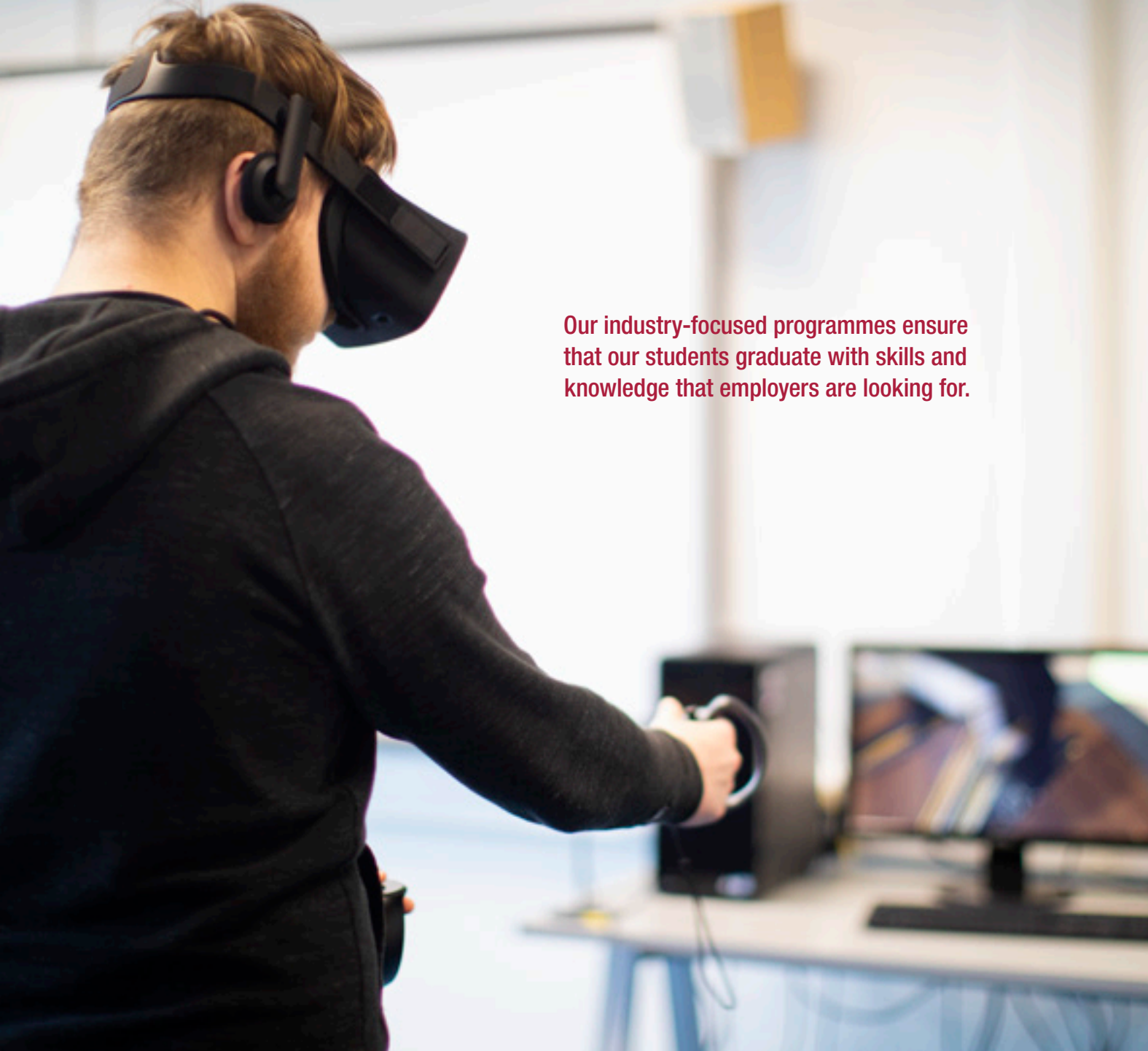
Performance Arts
Level 4 ATCL

Apprenticeships
Fashion & Textiles Product Technologist
Level 4

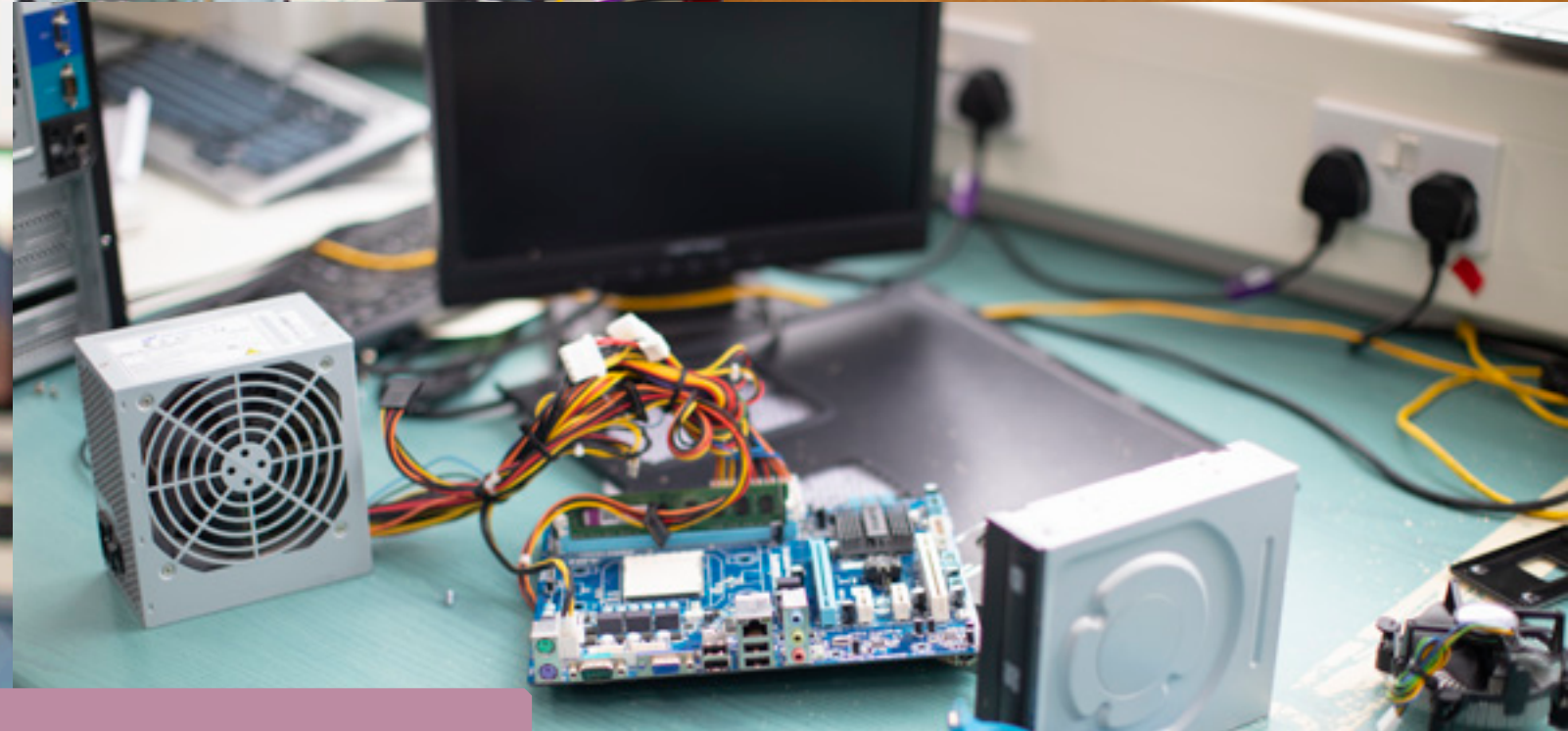
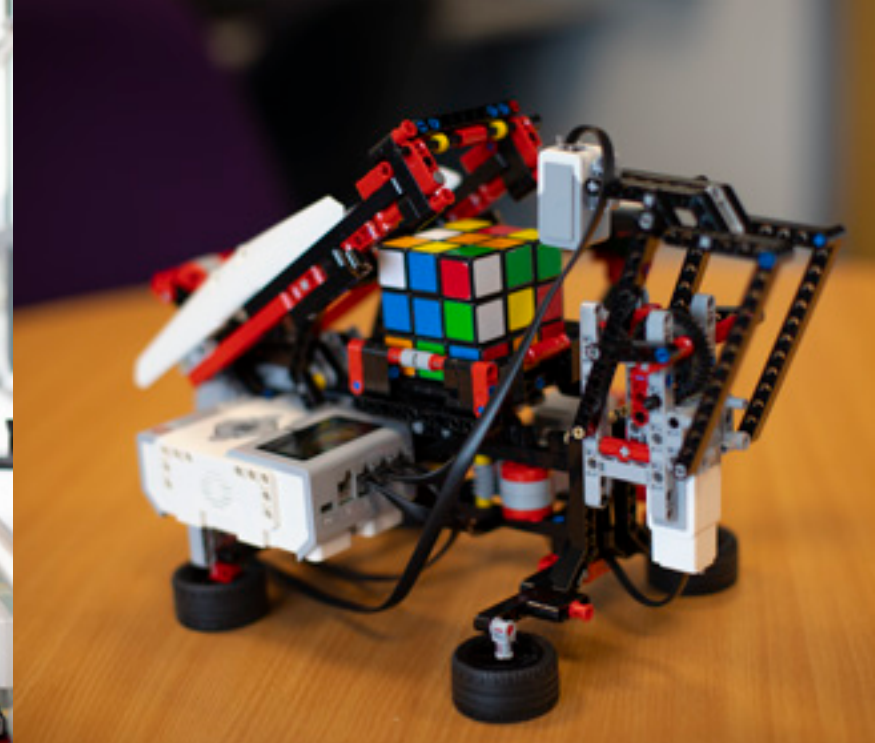


For information about all of our courses visit www.somerset.ac.uk where you can also request prospectuses for each subject area.





Our industry-focused programmes ensure that our students graduate with skills and knowledge that employers are looking for.





University
Centre
Somerset

Part of Bridgwater & Taunton College

COME AND SEE FOR YOURSELF

HE Open Events

Come and visit to see what makes
University Centre Somerset the perfect
place to start your journey.

Book your place now at
someset.ac.uk/events

Wellington Road, Taunton, Somerset TA1 5AX
01278 455464 | info@btc.ac.uk | someset.ac.uk



someset.ac.uk